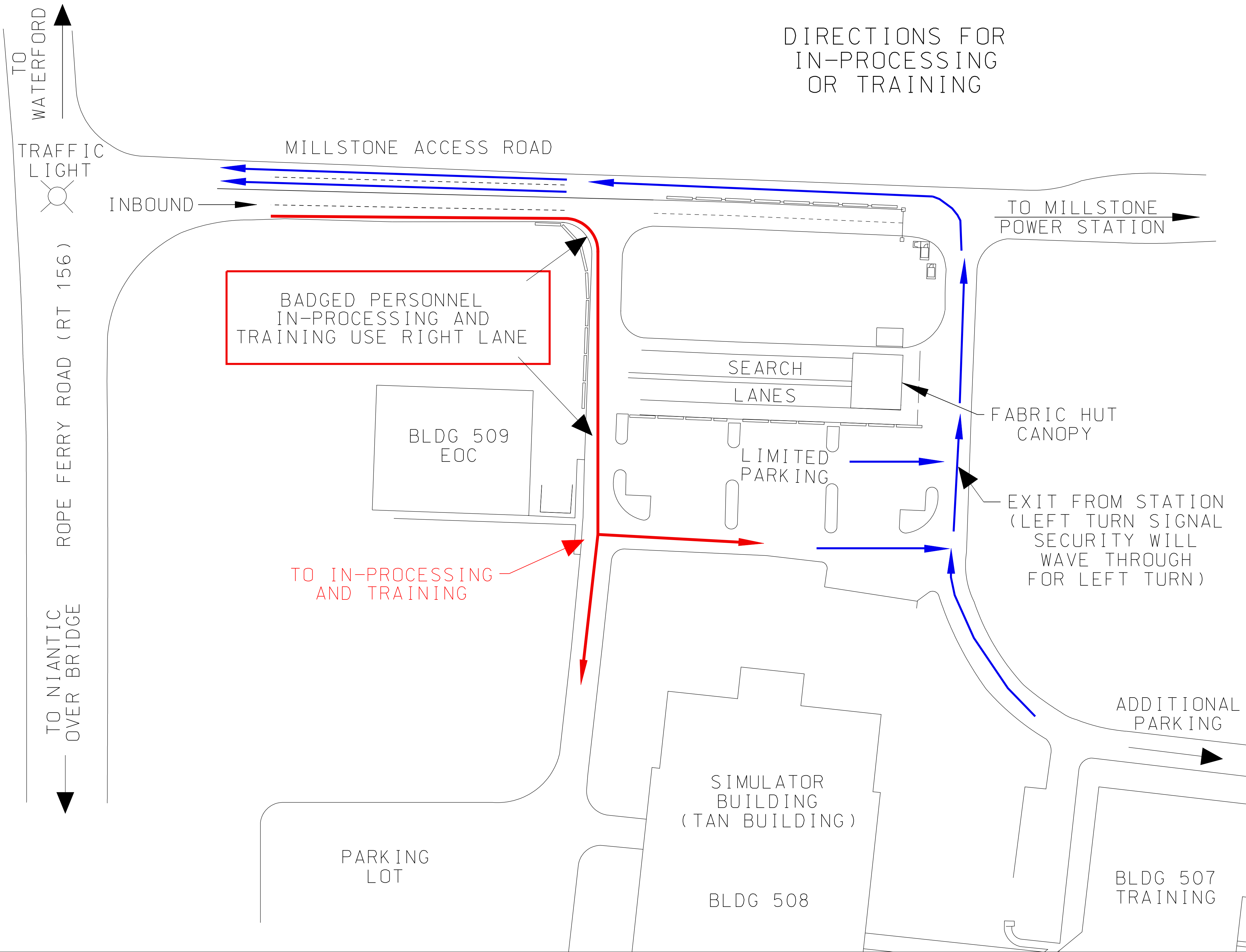


DIRECTIONS FOR IN-PROCESSING OR TRAINING



TO WATERFORD

TRAFFIC LIGHT

MILLSTONE ACCESS ROAD

INBOUND

TO MILLSTONE POWER STATION

BADGED PERSONNEL
IN-PROCESSING AND
TRAINING USE RIGHT LANE

BLDG 509
EOC

SEARCH
LANES

LIMITED
PARKING

FABRIC HUT
CANOPY

EXIT FROM STATION
(LEFT TURN SIGNAL
SECURITY WILL
WAVE THROUGH
FOR LEFT TURN)

TO IN-PROCESSING
AND TRAINING

ROPE FERRY ROAD (RT 156)

TO NIANTIC
OVER BRIDGE

SIMULATOR
BUILDING
(TAN BUILDING)

BLDG 508

ADDITIONAL
PARKING

PARKING
LOT

BLDG 507
TRAINING