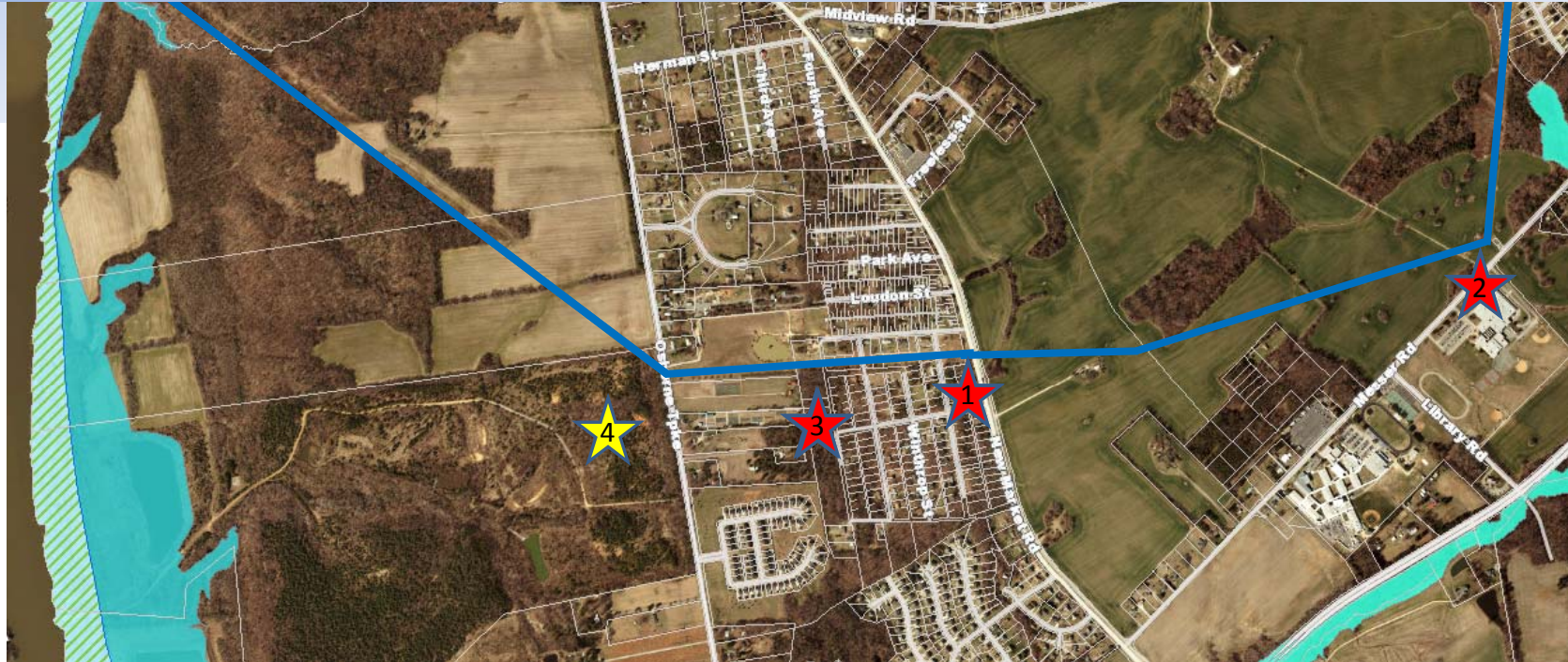


First 4 Sites Considered



Initial Sites

1. Corner of Rockingham/Rt. 5
2. Messer Rd across from John Rolfe M.S.
3. At end of Rockingham St.
4. 7000 Osborne Turnpike (old Vulcan quarry)

Reason(s) Rejected

1. On Rt. 5 & highly visible
2. Visible from John Rolfe M.S. & outside Load Area
3. High visibility & Civil War Trenches