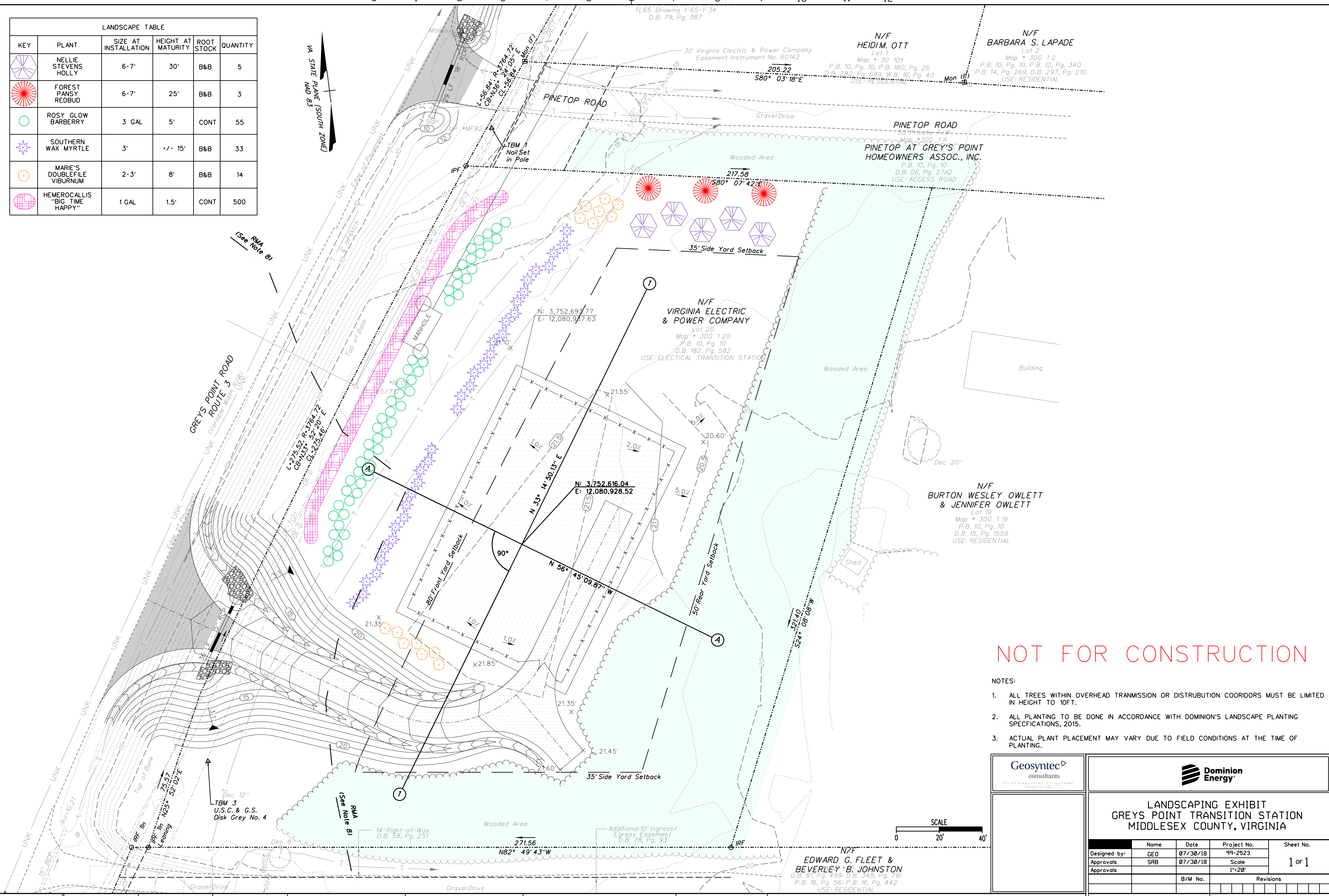
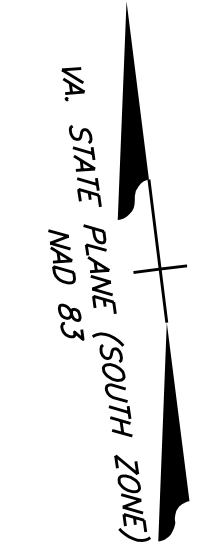


0 1 2 3 4 5 6 7 8 9 10 11 12

LANDSCAPE TABLE					
KEY	PLANT	SIZE AT INSTALLATION	HEIGHT AT MATURITY	ROOT STOCK	QUANTITY
	NELLIE STEVENS HOLLY	6-7'	30'	B&B	5
	FOREST PANSY REDBUD	6-7'	25'	B&B	3
	ROSY GLOW BARBERRY	3 GAL	5'	CONT	55
	SOUTHERN WAX MYRTLE	3'	+/- 15'	B&B	33
	MARIE'S DOUBLEFILE VIBURNUM	2-3'	8'	B&B	14
	HEMEROCALLIS "BIG TIME HAPPY"	1 GAL	1.5'	CONT	500



NOT FOR CONSTRUCTION

- NOTES:
- ALL TREES WITHIN OVERHEAD TRANSMISSION OR DISTRIBUTION COORIDORS MUST BE LIMITED IN HEIGHT TO 10FT.
  - ALL PLANTING TO BE DONE IN ACCORDANCE WITH DOMINION'S LANDSCAPE PLANTING SPECIFICATIONS, 2015.
  - ACTUAL PLANT PLACEMENT MAY VARY DUE TO FIELD CONDITIONS AT THE TIME OF PLANTING.

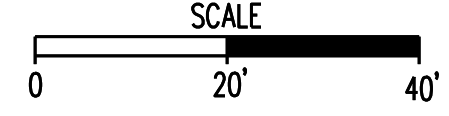
Geosyntec consultants



LANDSCAPING EXHIBIT  
GREYS POINT TRANSITION STATION  
MIDDLESEX COUNTY, VIRGINIA

Designed by:	GE0	Date	07/30/18	Project No.	99-2523	Sheet No.	1 of 1
Approvals:	SRB	Scale	1"=20'				

N7/F  
EDWARD C. FLEET &  
BEVERLEY B. JOHNSTON  
D.B. 81, Pg. 499; D.B. 348, Pg. 78;  
P.B. 16, Pg. 56; P.B. 16, Pg. 442  
USE: RESIDENTIAL



No.	Date	By	Description

Project Number	B/M

Revisions	Typical Drawing Information	Library Location	Cell Name	B/M Assembly	Pipe Stand Foundation Cells (Pier)	Pipe Stand Foundation Cells (Spread)	Foundation Cells for Other Typical Structures (Pier)	Foundation Cells for Other Typical Structures (Spread)	Steel Detail & Assembly

Cad File Name: 1552008a.dgn  
Drawing No.: 0000-000  
PLOTTED: \*\*\*\*\*SYTIME

border.dgn PLOTTED: \*\*\*\*\*SYTIME PUSERNAME