

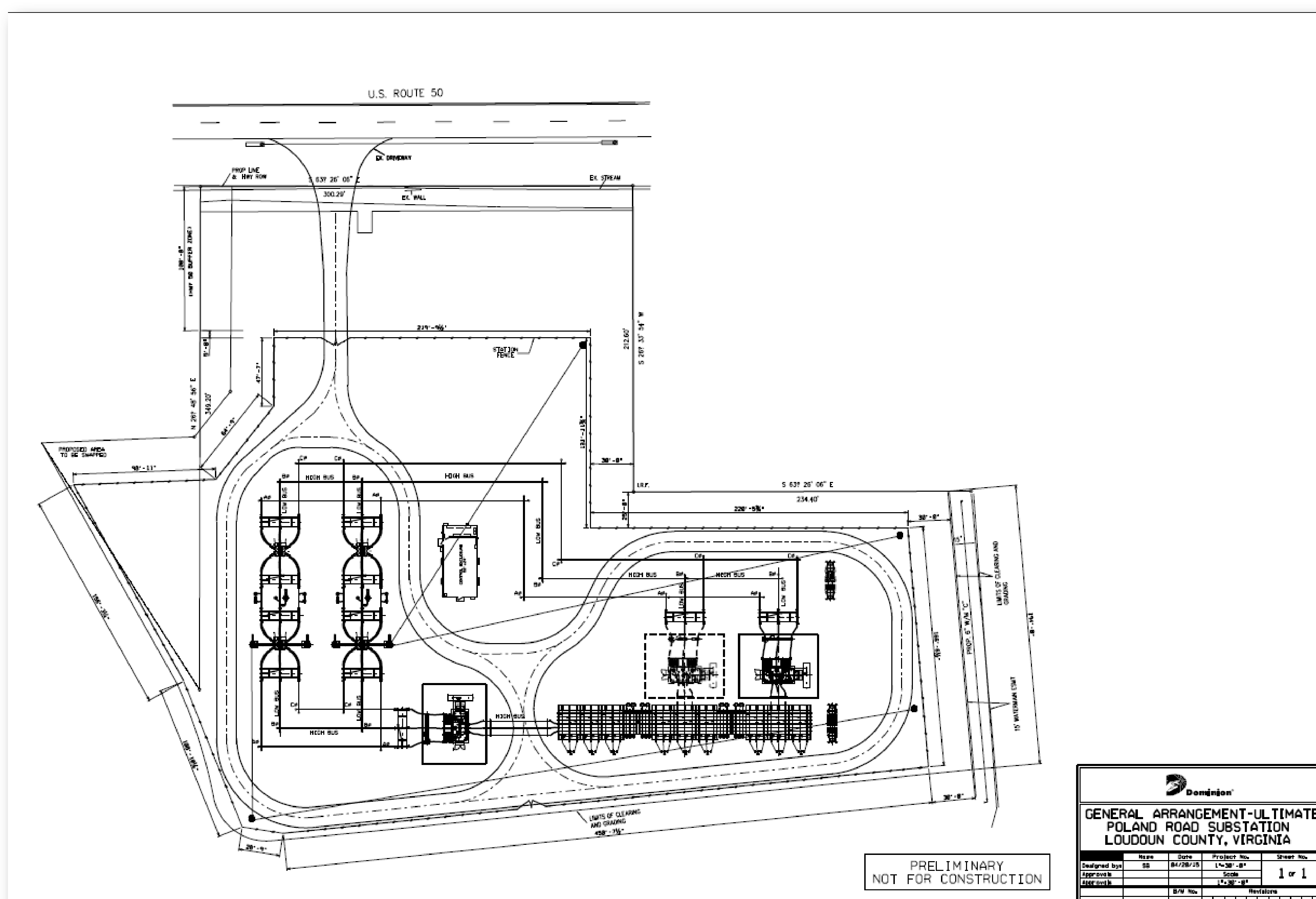
SUBSTATION DESIGN

What is a substation?

- Includes transformers that steps down the electric voltage from a transmission level to a distribution level in order to provide service to homes and businesses.
- Includes circuit breakers, like the breakers in a home's electrical box, that protects the line from damage

Will it meet the Type 5 buffer requirements along Rt. 50?

- Yes. We have taken into account the necessary set backs in our planning. Landscaping has yet to be planned, but will accommodate the requirements while meeting our right of way vegetation restrictions. How we plan to adhere to the Type 5 buffer will be included in our permit application.



Current Poland Rd Substation Plan View – Not Final