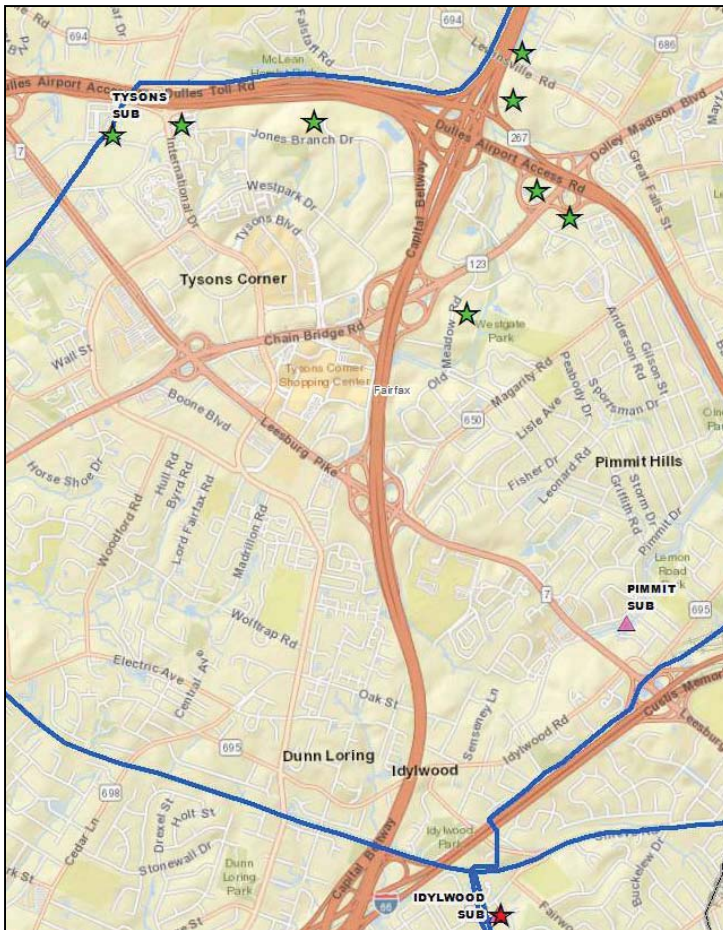




Determining Start & End Points



Starting Point: Existing Idylwood Substation

Ending Point Options:

- Existing Tysons Substation
- Transit Station
- Scotts Run
- Cloverleaf
- Chain Bridge
- Old Meadow Road
- Jones Branch

Site Selection Include:

- Property size
- Ability to connect to distribution circuits
- Permitting requirements
- Environmental Constraints

*Dominion began analysis in 2014**



Sites Examined

Selected Site

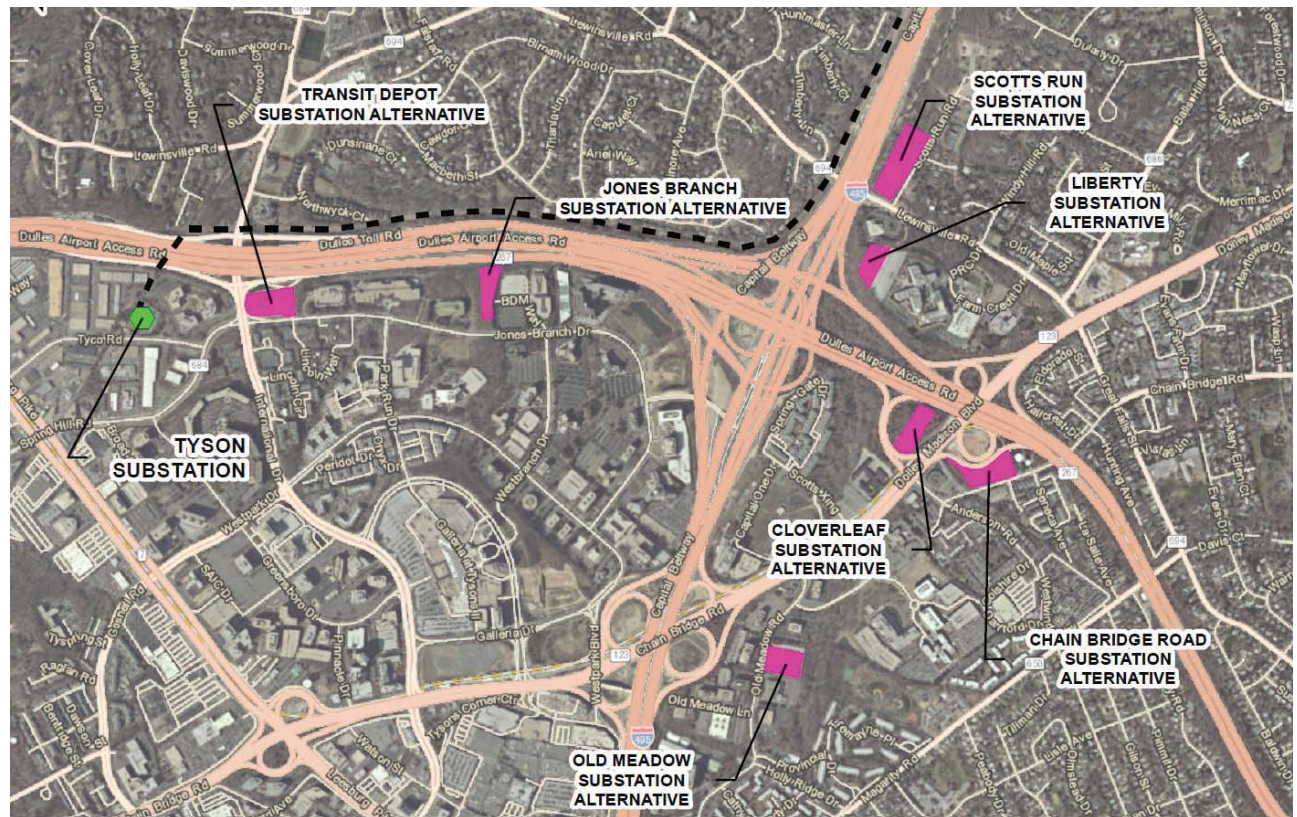
- Tysons Substation

Alternate Sites Considered

- Jones Branch Road
- Chain Bridge Road*
- Scotts Run Road
- Cloverleaf

Eliminated Sites

- Liberty Crossing
- Transit Depot*
- Old Meadow Road



*Sites identified by Fairfax DOT