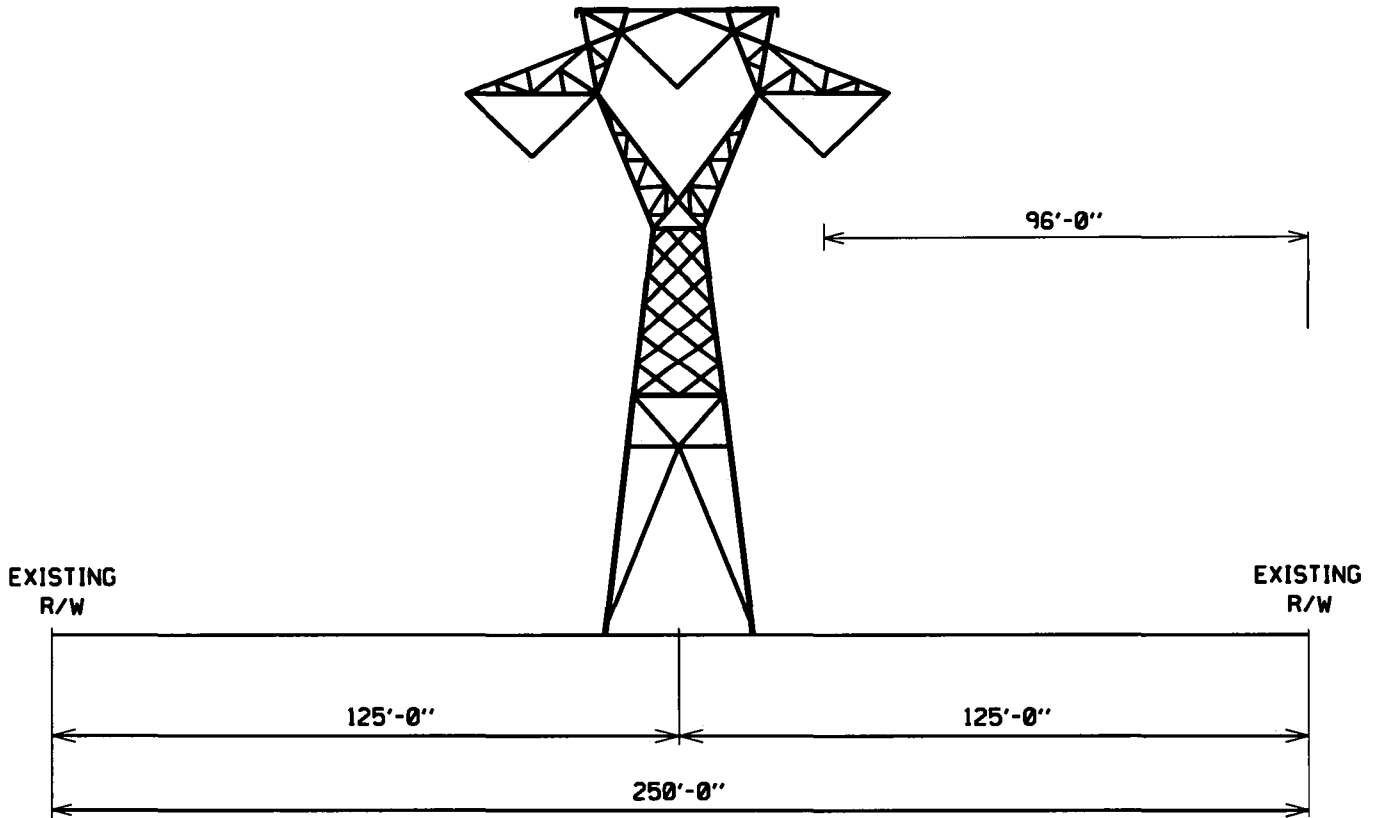


STRUCTURE NUMBER 585/143 - 141

EXISTING
500KV CIRCUIT
(LINE #585)

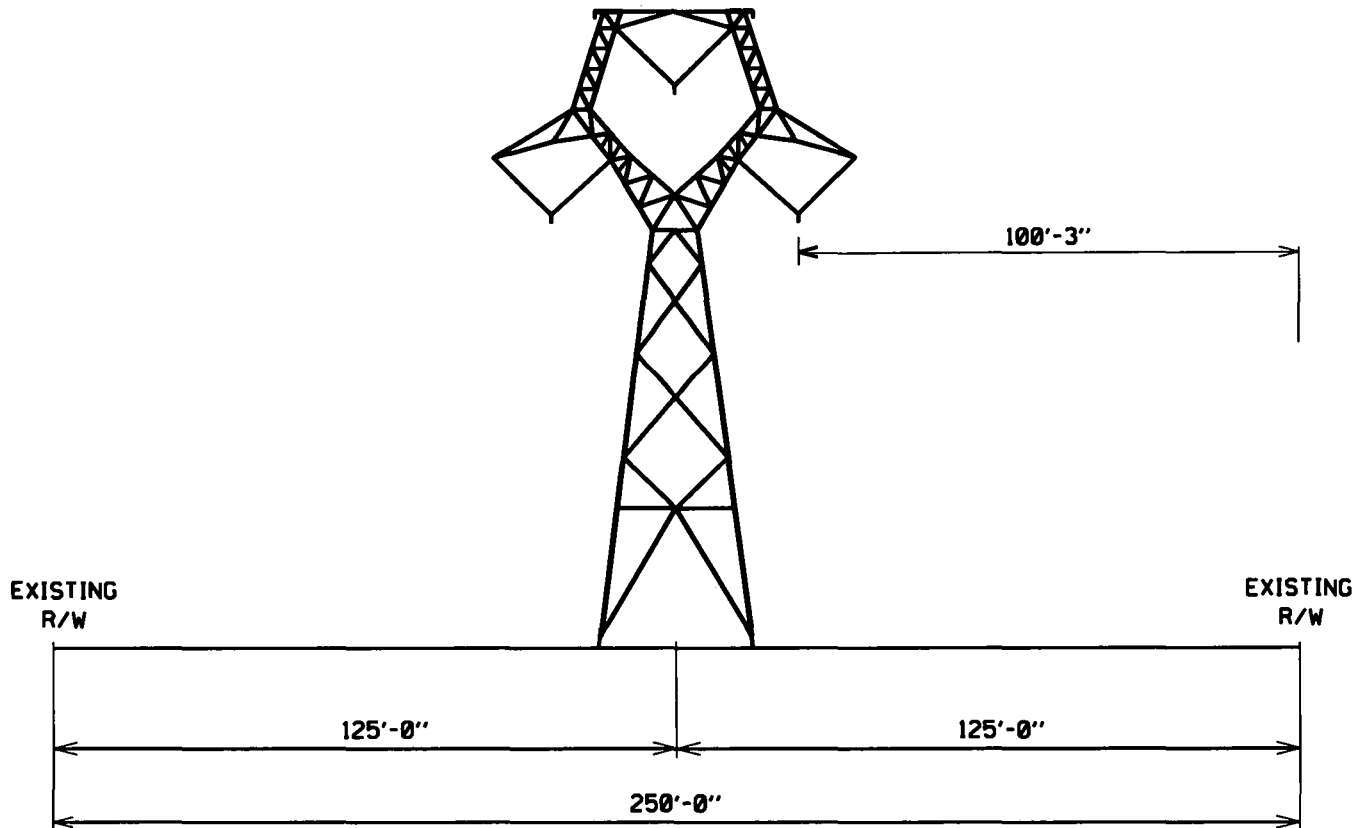


EXISTING CONFIGURATION
TYPICAL RIGHT OF WAY LOOKING TOWARD CARSON

TYPE OF STRUCTURE:	LATTICE TOWER
FOUNDATION :	CONCRETE/PILES
APPROXIMATE AVERAGE HEIGHT:	124 FEET
WIDTH AT CROSSARM:	84 FEET
WIDTH AT BASE:	29 FEET
APPROX. AVERAGE SPAN LENGTH:	1159 FEET
CONDUCTOR TYPE:	ALUMINUM
RIGHT OF WAY WIDTH:	250 FEET
APPROXIMATE LENGTH OF LINE :	0.4 MILES

STRUCTURE NUMBER 585/143 - 141

PROPOSED
500KV CIRCUIT
(LINE #585)



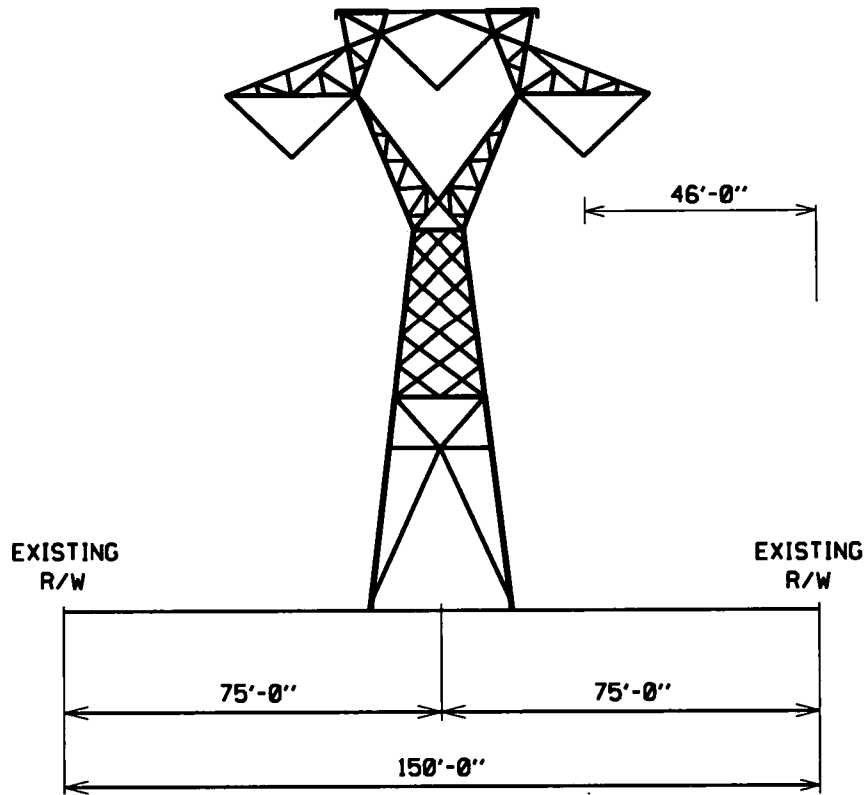
PROPOSED CONFIGURATION
TYPICAL RIGHT OF WAY LOOKING TOWARD CARSON

TYPE OF STRUCTURE:	LATTICE TOWER
FOUNDATION :	CONCRETE/PILES
APPROXIMATE AVERAGE HEIGHT:	126 FEET
WIDTH AT CROSSARM:	73 FEET
WIDTH AT BASE:	31 FEET
APPROX. AVERAGE SPAN LENGTH:	1087 FEET
CONDUCTOR TYPE:	ALUMINUM
RIGHT OF WAY WIDTH:	250 FEET
APPROXIMATE LENGTH OF LINE :	0.4 MILES

\$DGN\$SPEC\$

STRUCTURE 585/141 - 14

EXISTING
500KV CIRCUIT
(LINE #585)

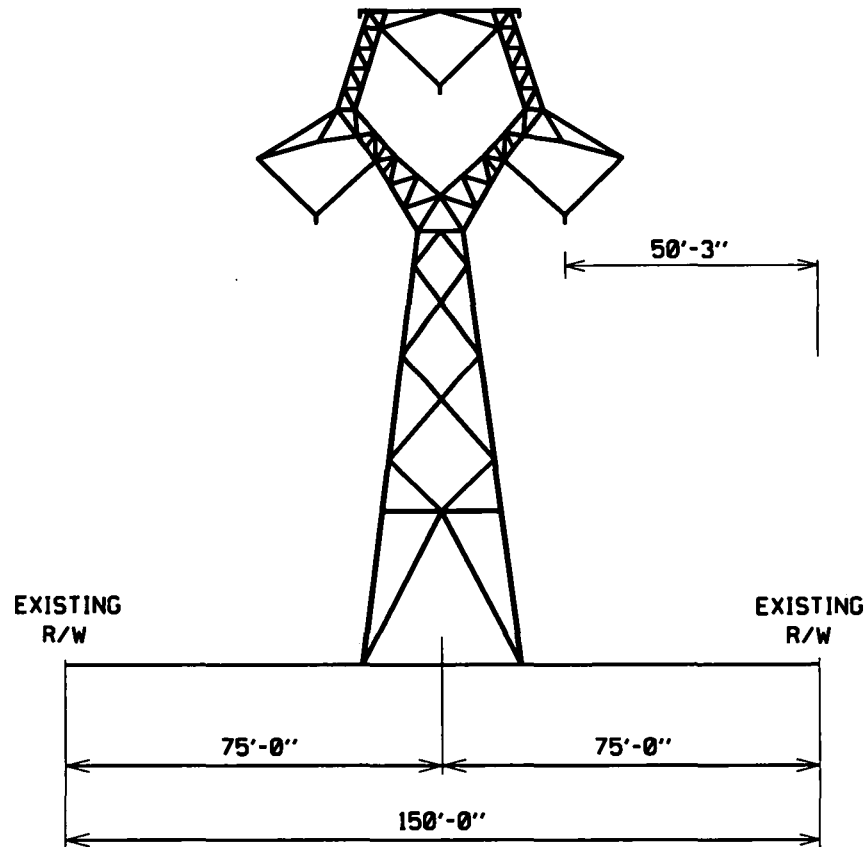


EXISTING CONFIGURATION
TYPICAL RIGHT OF WAY LOOKING TOWARD CARSON

TYPE OF STRUCTURE:	LATTICE TOWER
FOUNDATION :	CONCRETE/PILES
APPROXIMATE AVERAGE HEIGHT:	118 FEET
WIDTH AT CROSSARM:	84 FEET
WIDTH AT BASE:	28 FEET
APPROX. AVERAGE SPAN LENGTH:	1043 FEET
CONDUCTOR TYPE:	ALUMINUM
RIGHT OF WAY WIDTH:	150 FEET
APPROXIMATE LENGTH OF LINE :	25.1 MILES

STRUCTURE 585/141 - 14

PROPOSED
500KV CIRCUIT
(LINE #585)

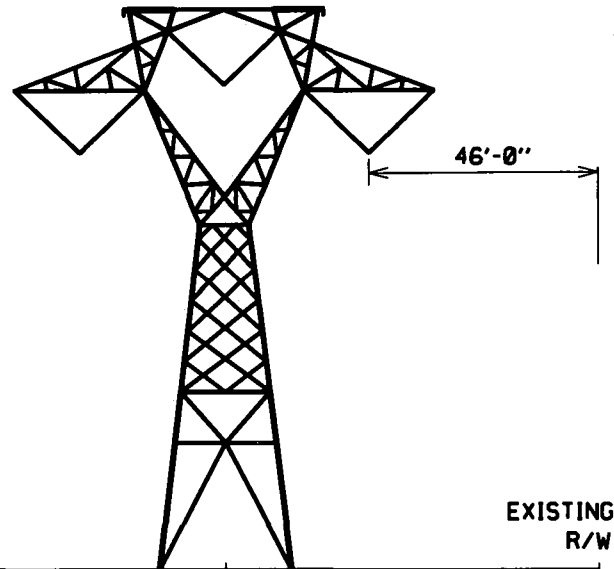


PROPOSED CONFIGURATION
TYPICAL RIGHT OF WAY LOOKING TOWARD CARSON

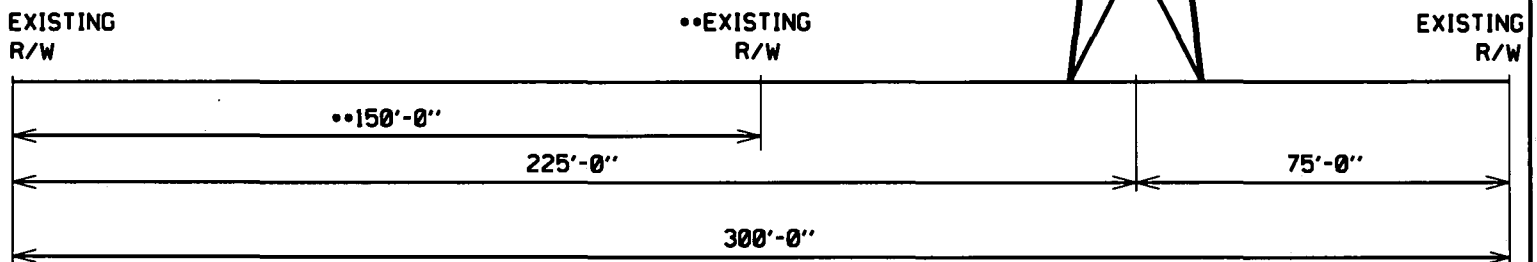
TYPE OF STRUCTURE:	LATTICE TOWER
FOUNDATION :	CONCRETE/PILES
APPROXIMATE AVERAGE HEIGHT:	128 FEET
WIDTH AT CROSSARM:	73 FEET
WIDTH AT BASE:	32 FEET
APPROX. AVERAGE SPAN LENGTH:	1044 FEET
CONDUCTOR TYPE:	ALUMINUM
RIGHT OF WAY WIDTH:	150 FEET
APPROXIMATE LENGTH OF LINE :	25.1 MILES

STRUCTURE 585/14 - 3

EXISTING
500KV CIRCUIT
(LINE #585)



••THERE IS ONE PARCEL WHERE THE ADDITIONAL
150' R/W WAS NOT ACQUIRED FOR A LENGTH OF
1129' ALONG THE CENTERLINE OF THE "WESTERN"
150' R/W SECTION

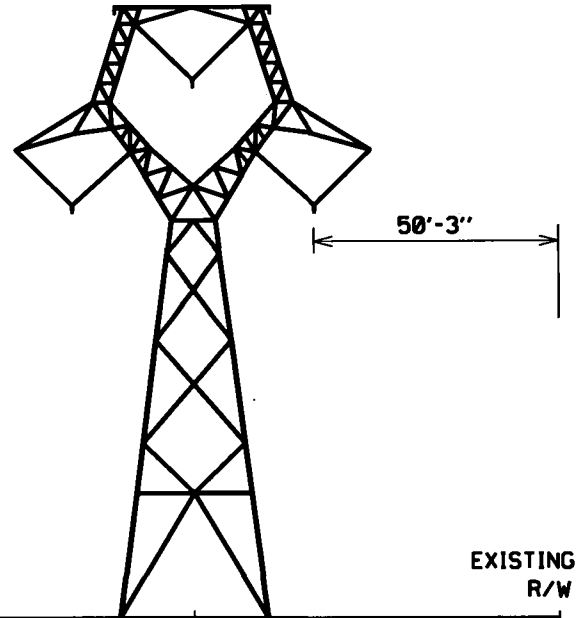


EXISTING CONFIGURATION
TYPICAL RIGHT OF WAY LOOKING TOWARD CARSON

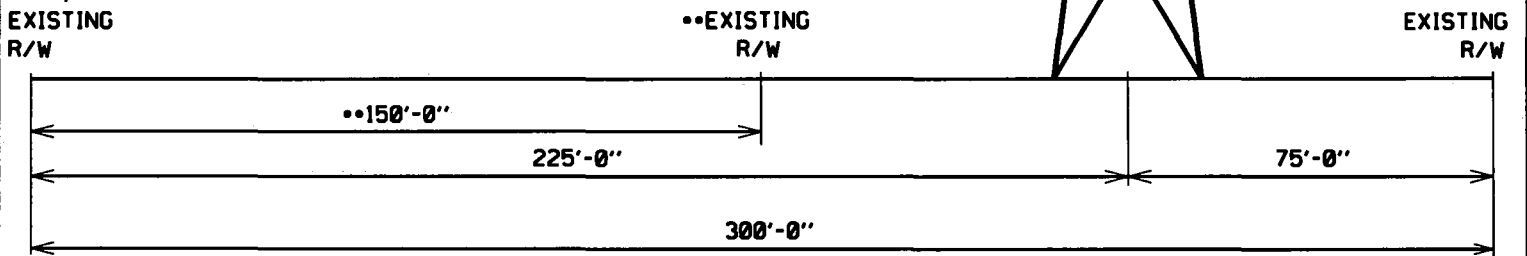
TYPE OF STRUCTURE:	LATTICE TOWER
FOUNDATION :	CONCRETE/PILES
APPROXIMATE AVERAGE HEIGHT:	111 FEET
WIDTH AT CROSSARM:	84 FEET
WIDTH AT BASE:	27 FEET
APPROX. AVERAGE SPAN LENGTH:	1033 FEET
CONDUCTOR TYPE:	ALUMINUM
RIGHT OF WAY WIDTH:	300 FEET ••
APPROXIMATE LENGTH OF LINE :	2.2 MILES

STRUCTURE 585/14 - 3

PROPOSED
500KV CIRCUIT
(LINE #585)



••THERE IS ONE PARCEL WHERE THE ADDITIONAL
150' R/W WAS NOT ACQUIRED FOR A LENGTH OF
1129' ALONG THE CENTERLINE OF THE 'WESTERN'
150' R/W SECTION



PROPOSED CONFIGURATION
TYPICAL RIGHT OF WAY LOOKING TOWARD CARSON

TYPE OF STRUCTURE:	LATTICE TOWER
FOUNDATION :	CONCRETE/PILES
APPROXIMATE AVERAGE HEIGHT:	124 FEET
WIDTH AT CROSSARM:	73 FEET
WIDTH AT BASE:	30 FEET
APPROX. AVERAGE SPAN LENGTH:	1031 FEET
CONDUCTOR TYPE:	ALUMINUM
RIGHT OF WAY WIDTH:	300 FEET ••
APPROXIMATE LENGTH OF LINE :	2.2 MILES

\$DCNSPEC\$