

Proposed Structure Configuration

Corridor between Loudoun/Mosby and Pleasant View/Goose Creek Substations

No new right-of-way is needed for either project

WESTERN SIDE OF CORRIDOR

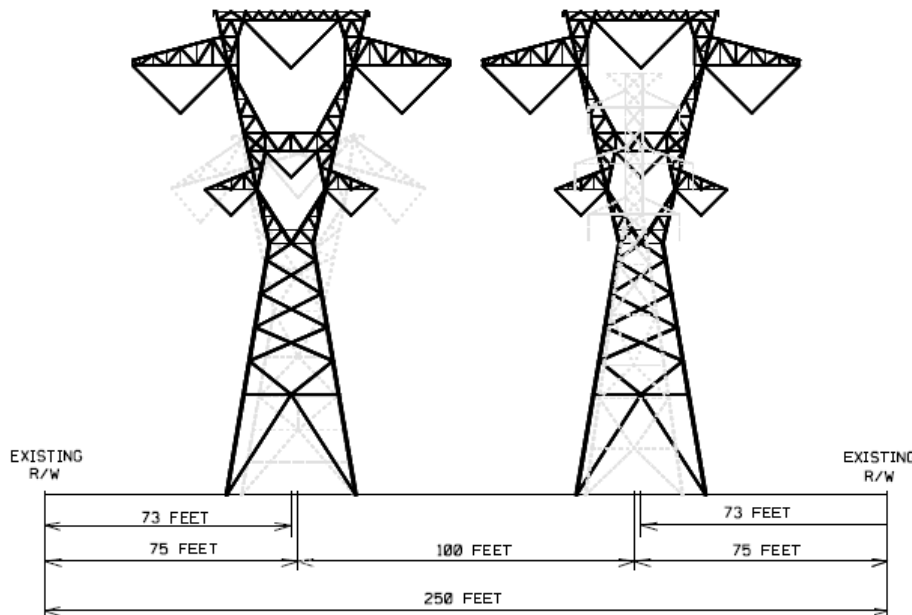
Loudoun-Pleasant View 500kV Rebuild Project

- Appr. 13 miles
- Approved by SCC April 2014
- Remove existing structure, replace with 500kV/230kV structure (appr. 30'-40' taller)
- Construction begins 2015

EASTERN SIDE OF CORRIDOR

Brambleton-Mosby 500kV Project

- Appr. 5 miles
- Application to be filed with SCC in 2014
- Remove existing 230kV structure, replace with 500kV/230kV structure (appr. 20' taller)
- Construction begins 2016



Visit www.dom.com, search "Brambleton" for maps and more details