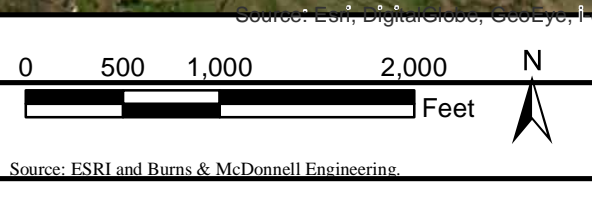


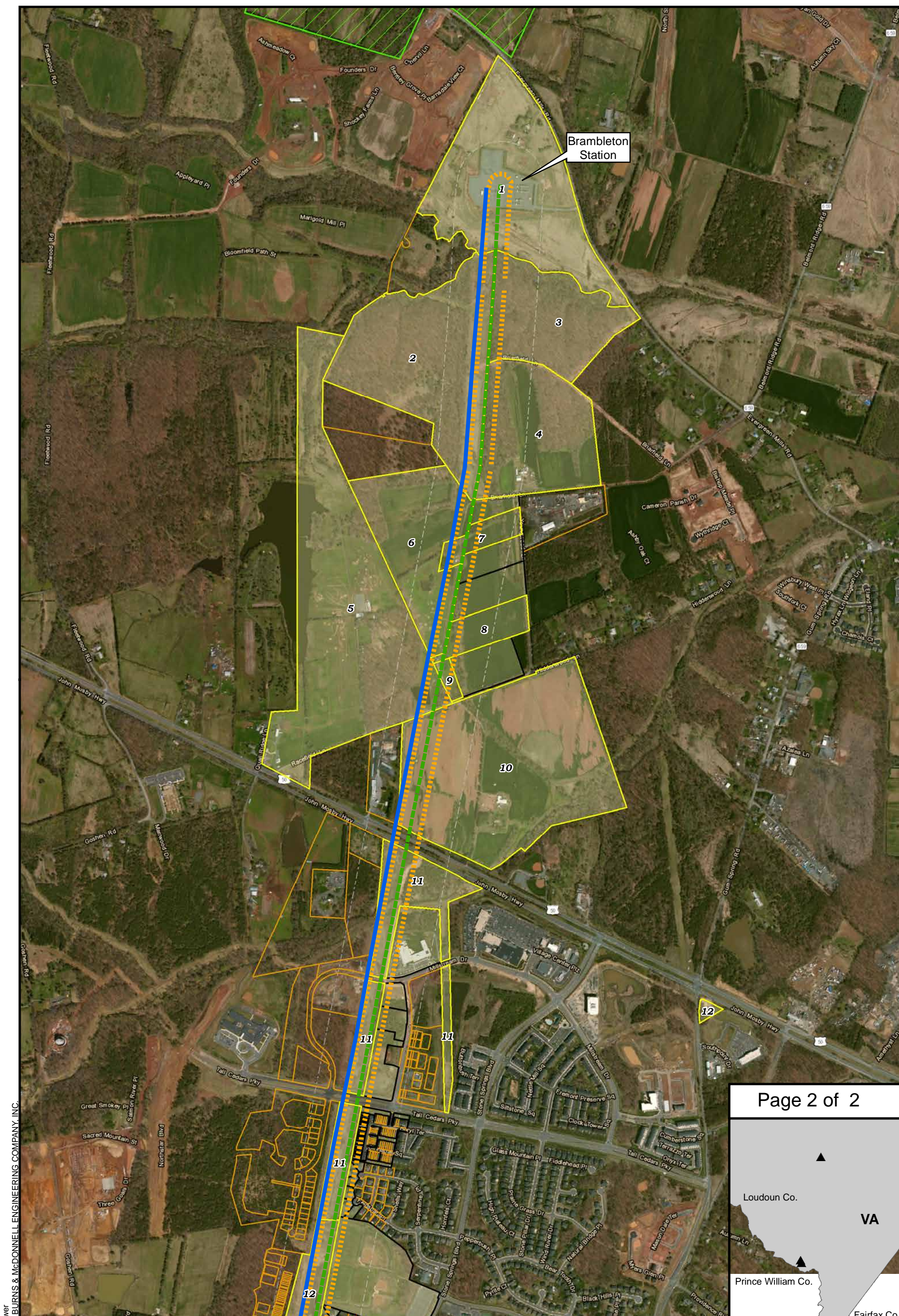
Dominion Virginia Power  
 COPYRIGHT © 2014 BURNS & McDONNELL ENGINEERING COMPANY, INC.

	Proposed Rebuild		Parcel 500'
	Existing 230 kV Transmission Lines		500' Mailing Boundary
	Parcel Boundary		Airport
	Parcel Crossed by ROW		Recreation Area
	Parcel Crossed by Line		

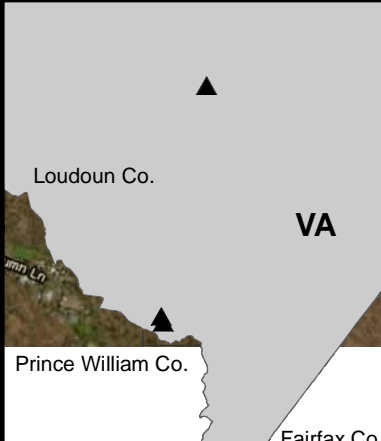


Source: ESRI and Burns & McDonnell Engineering.

Issued: July, 17 2014



Brambleton Station



	Proposed Rebuild		Parcel 500'
	Existing 230 kV Transmission Lines		500' Mailing Boundary
	Parcel Boundary		Airport
	Parcel Crossed by ROW		Recreation Area
	Parcel Crossed by Line		

