



LOOKING NORTHWEST – EXISTING TRANSMISSION STRUCTURE #2010/2 – 70'± HIGH  
SINGLE CIRCUIT WOODEN POLE

Photograph provided by Dominion

**Existing Structure Type:  
Single Circuit Wood Pole**



LOOKING NORTHWEST – EXISTING TRANSMISSION STRUCTURE #2010/3 – 65.5'± HIGH  
SINGLE CIRCUIT WOOD POLE

Photograph provided by Dominion

**Existing Structure Type:**  
**Single Circuit Wood Pole**

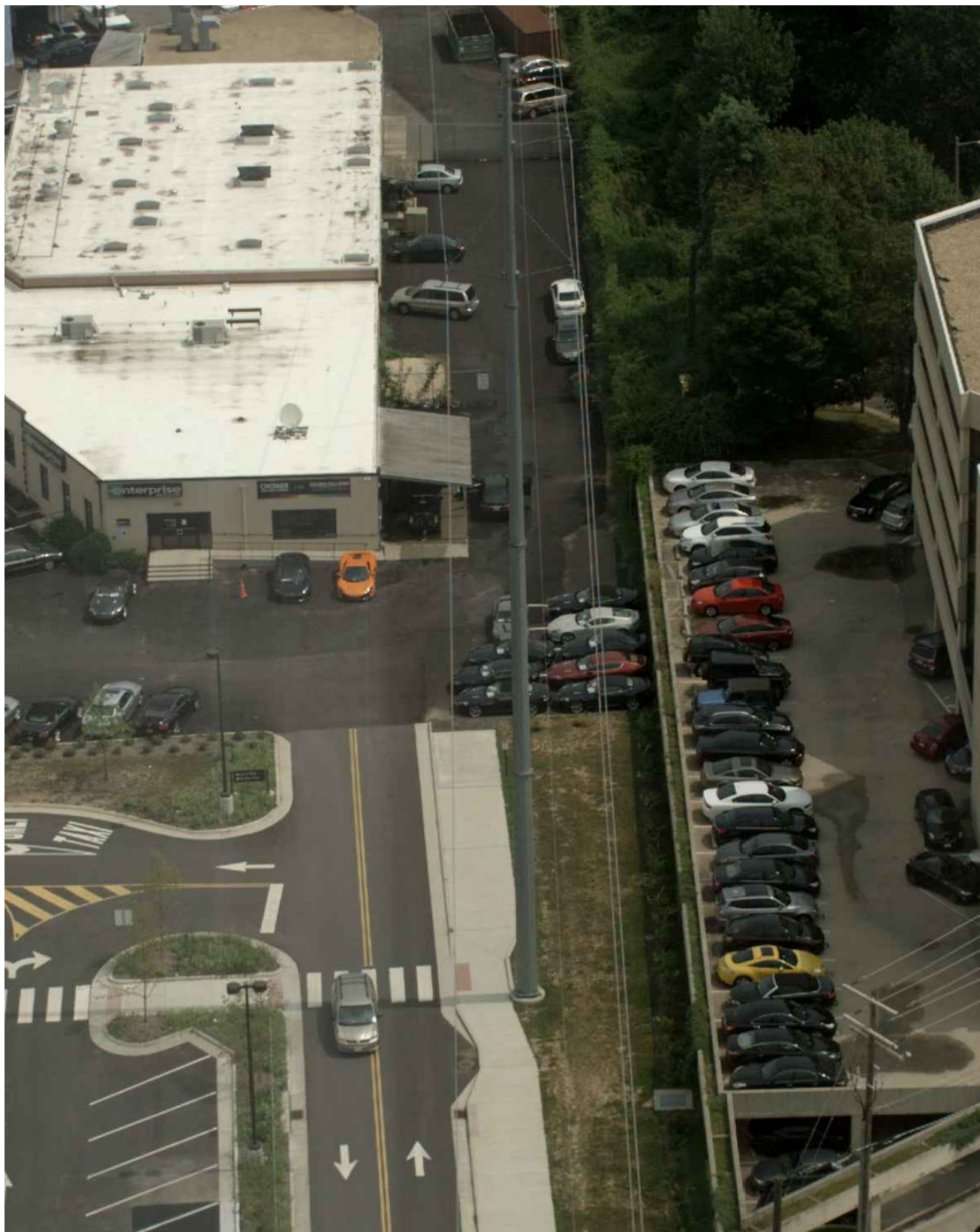




LOOKING NORTHWEST — EXISTING TRANSMISSION STRUCTURE #2010/4 — 70'± HIGH  
SINGLE CIRCUIT STEEL POLE

Photograph provided by Dominion

**Existing Structure Type:**  
**Single Circuit Steel Pole**



LOOKING NORTHEAST – EXISTING TRANSMISSION STRUCTURE #2010/5 – 140'± HIGH  
SINGLE CIRCUIT STEEL POLE

Photograph provided by Dominion

**Existing Structure Type:  
Single Circuit Steel Pole**





LOOKING NORTHEAST — EXISTING TRANSMISSION STRUCTURE #2010/6 — 140'± HIGH SINGLE CIRCUIT STEEL POLE

Photograph provided by Dominion

**Existing Structure Type:  
Single Circuit Steel Pole**

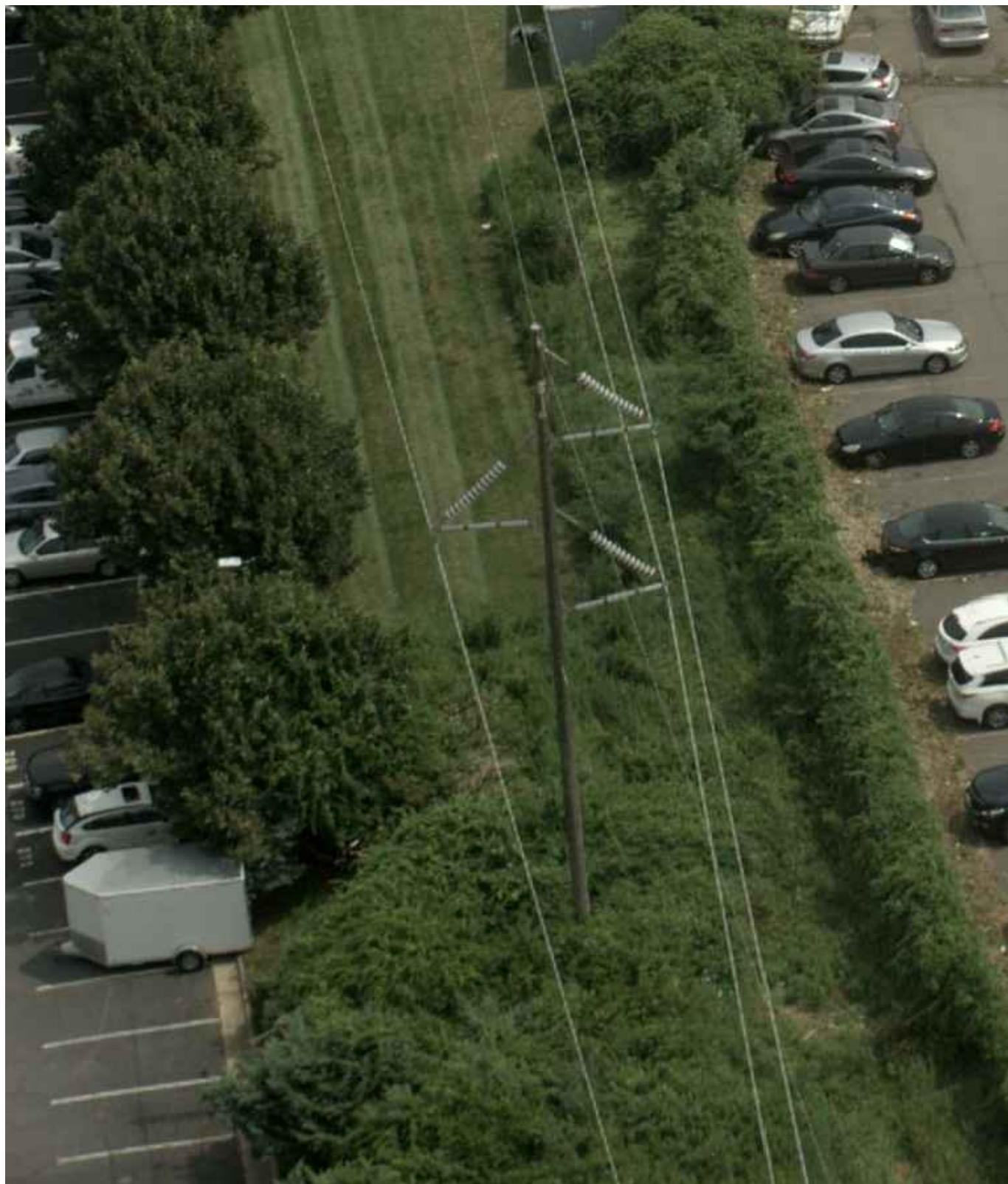


LOOKING NORTHEAST – EXISTING TRANSMISSION STRUCTURE #2010/7 – 70'± HIGH SINGLE  
CIRCUIT STEEL POLE

Photograph provided by Dominion

**Existing Structure Type:  
Single Circuit Steel Pole**





LOOKING NORTHEAST — EXISTING TRANSMISSION STRUCTURE #2010/10 — 61'± HIGH SINGLE  
CIRCUIT STEEL POLE

Photograph provided by Dominion

**Existing Structure Type:  
Single Circuit Steel Pole**





LOOKING NORTHEAST – EXISTING TRANSMISSION STRUCTURE #2010/11 – 65.5'± HIGH  
SINGLE CIRCUIT WOOD POLE

Photograph provided by Dominion

**Existing Structure Type:  
Single Circuit Wood Pole**





LOOKING NORTHEAST — EXISTING TRANSMISSION STRUCTURE #2010/12 — 61'± HIGH SINGLE  
CIRCUIT WOOD POLE

Photograph provided by Dominion

**Existing Structure Type:  
Single Circuit Wood Pole**