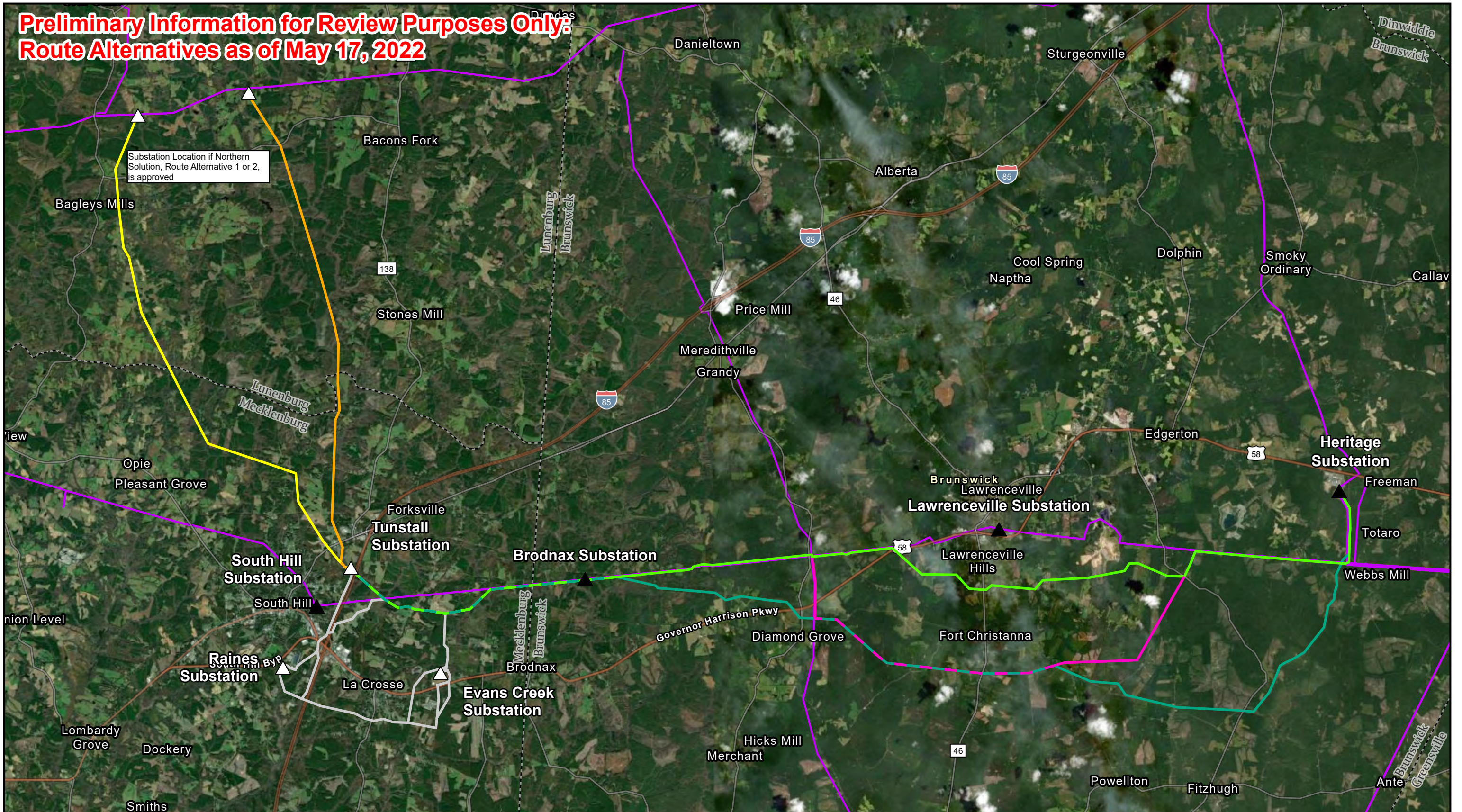
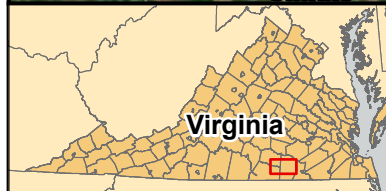


**Preliminary Information for Review Purposes Only:
Route Alternatives as of May 17, 2022**



Substation Location if Northern Solution, Route Alternative 1 or 2, is approved



- ▲ Existing Dominion Substation
- △ Proposed Dominion Substation
- Existing Dominion Transmission Line
- Eastern Solution, Route Alternative 1
- Eastern Solution, Route Alternative 1 Variation
- Eastern Solution, Route Alternative 2
- Northern Solution, Route Alternative 1
- Northern Solution, Route Alternative 2
- Substation Interconnect Route



Project Overview
South Hill 230 kV Project
 Dominion Energy Virginia
 Brunswick, Lunenburg, and Mecklenburg Counties, Virginia

