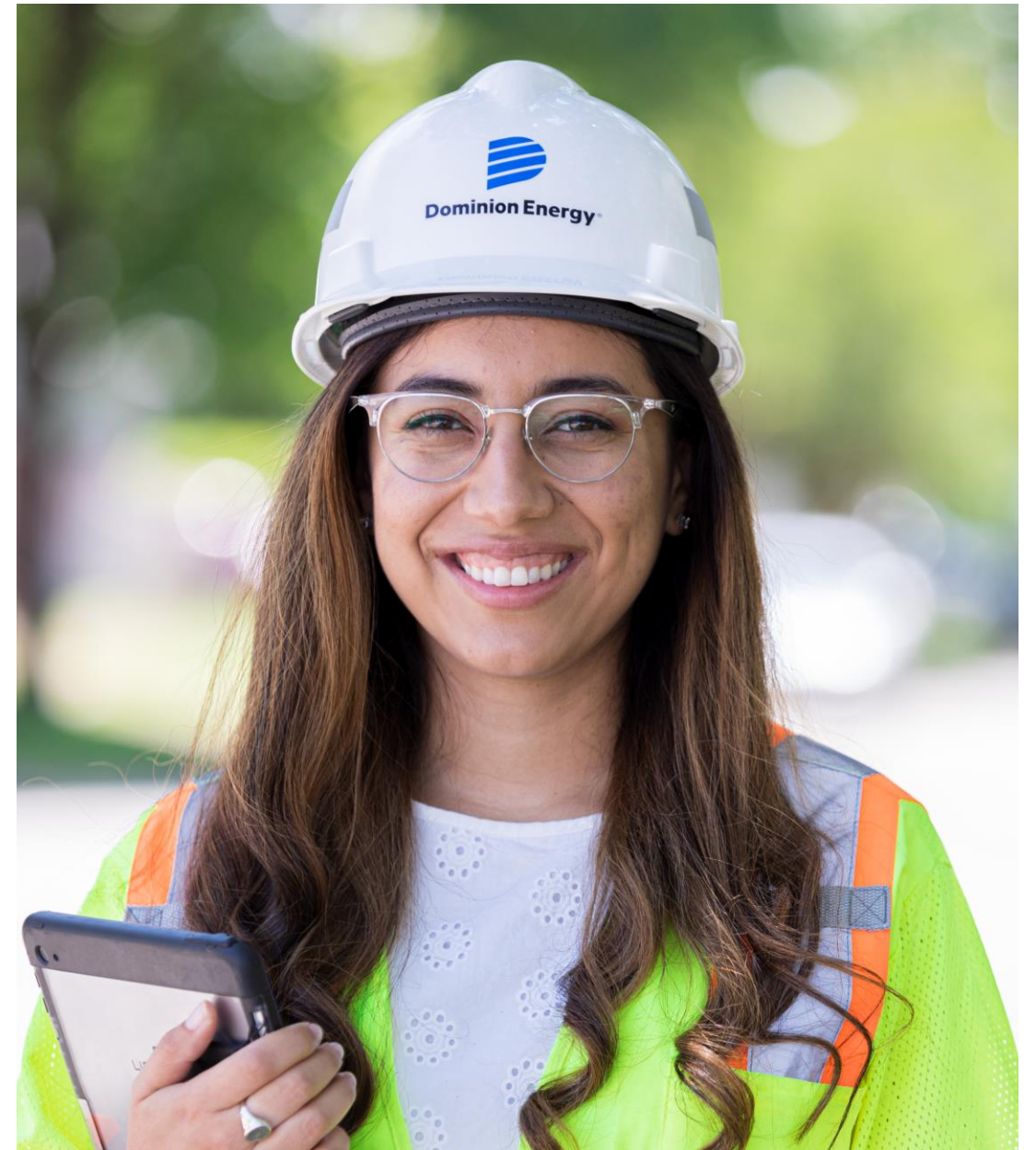


Meeting Virginia's Energy Needs



**Dominion
Energy®**

Actions Speak Louder



Electric Transmission Line Planning and Approval Process

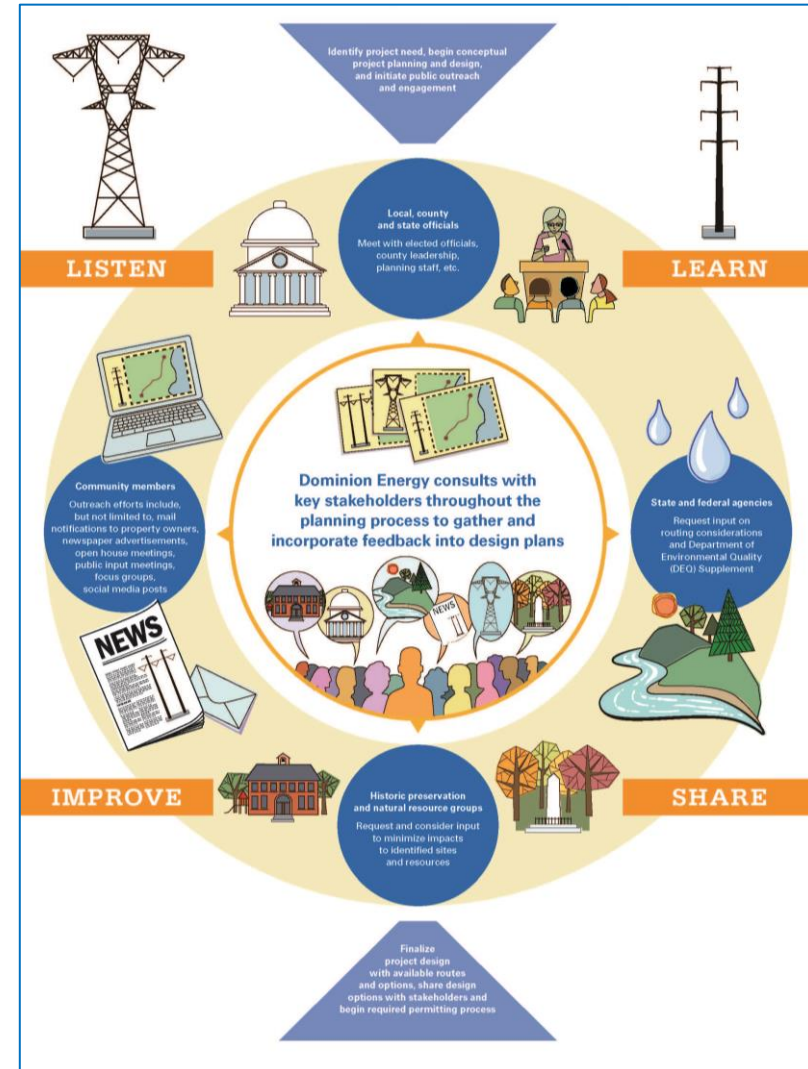


Relationships

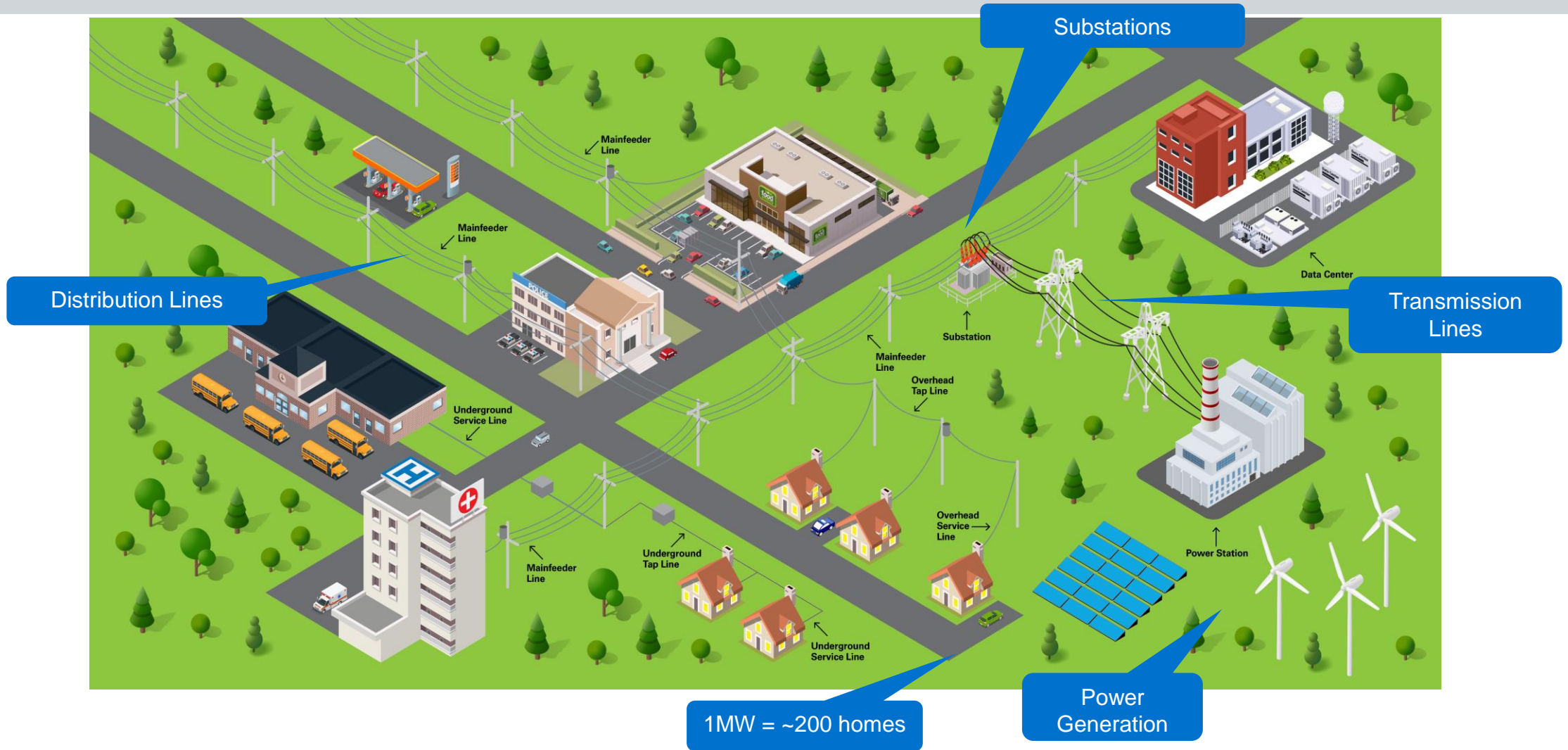
- Value what the community values
- Seek available mutual benefits

Trust

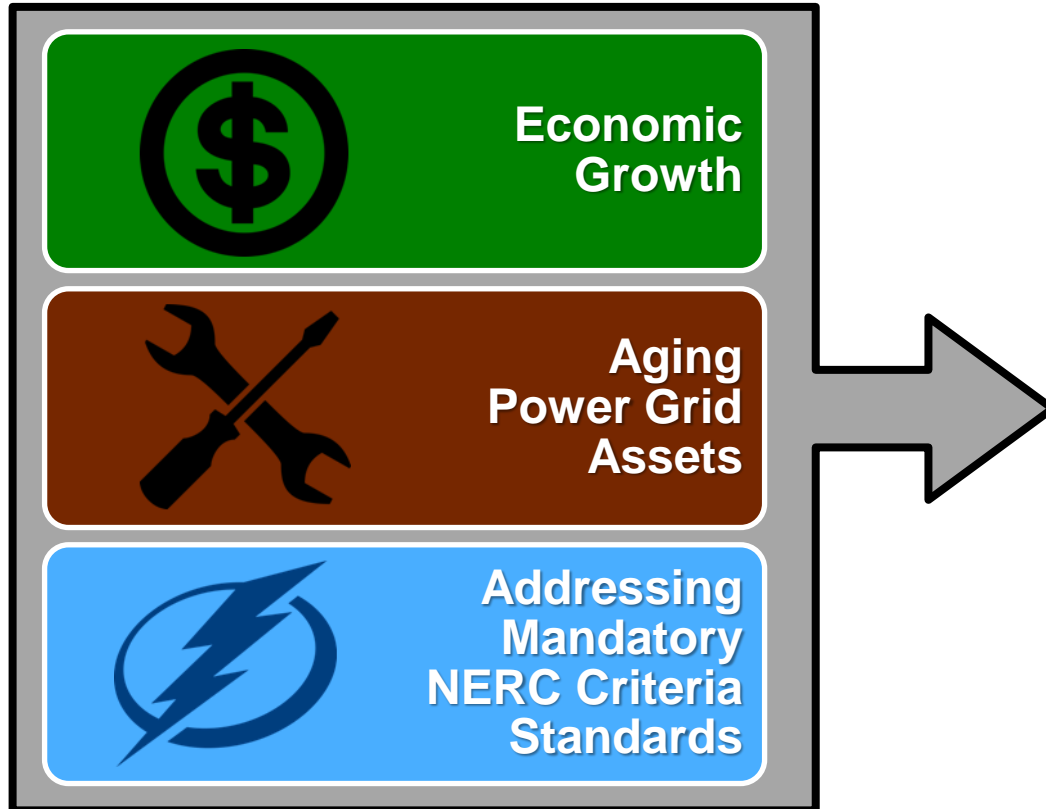
- Discussion, connection and empathy
- Stakeholders' willingness to compromise



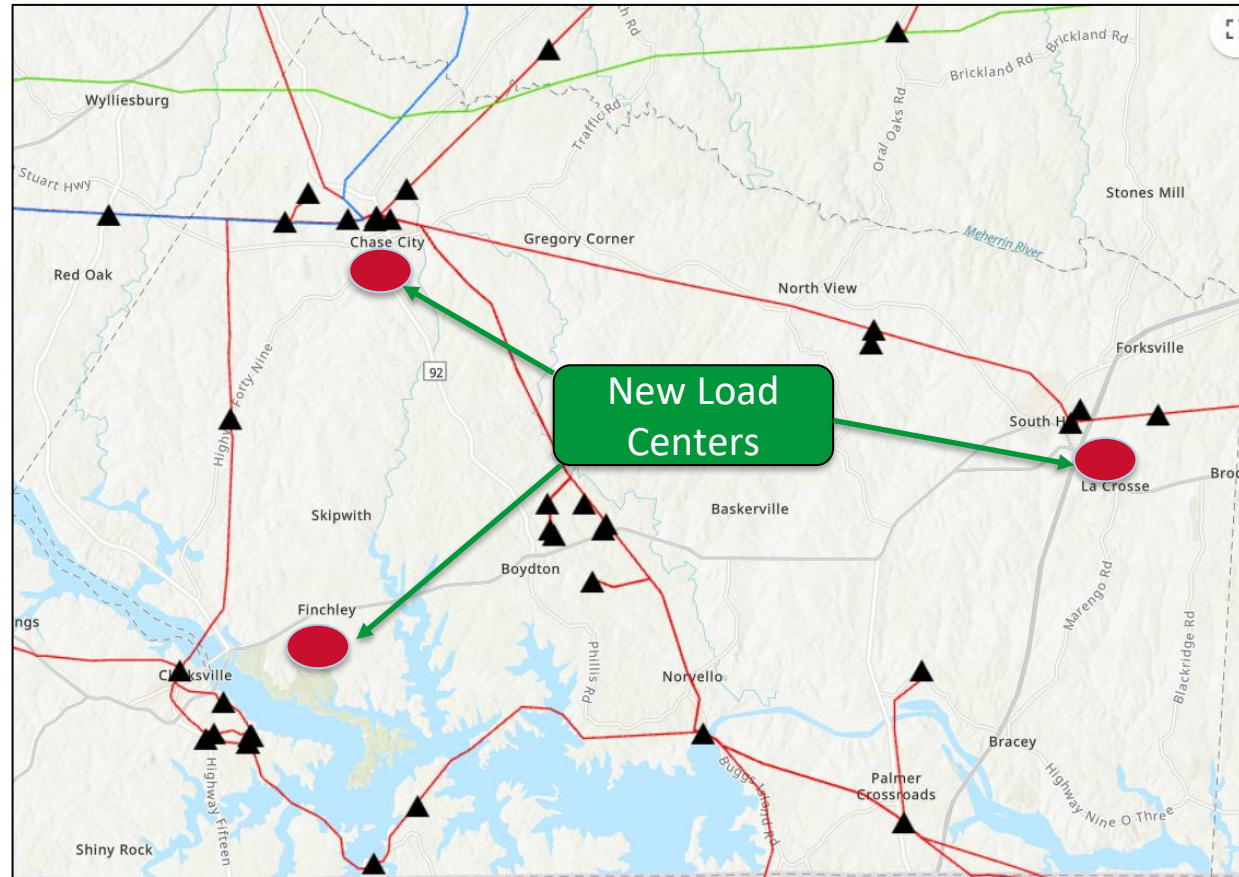
The Grid and Obligation to Serve



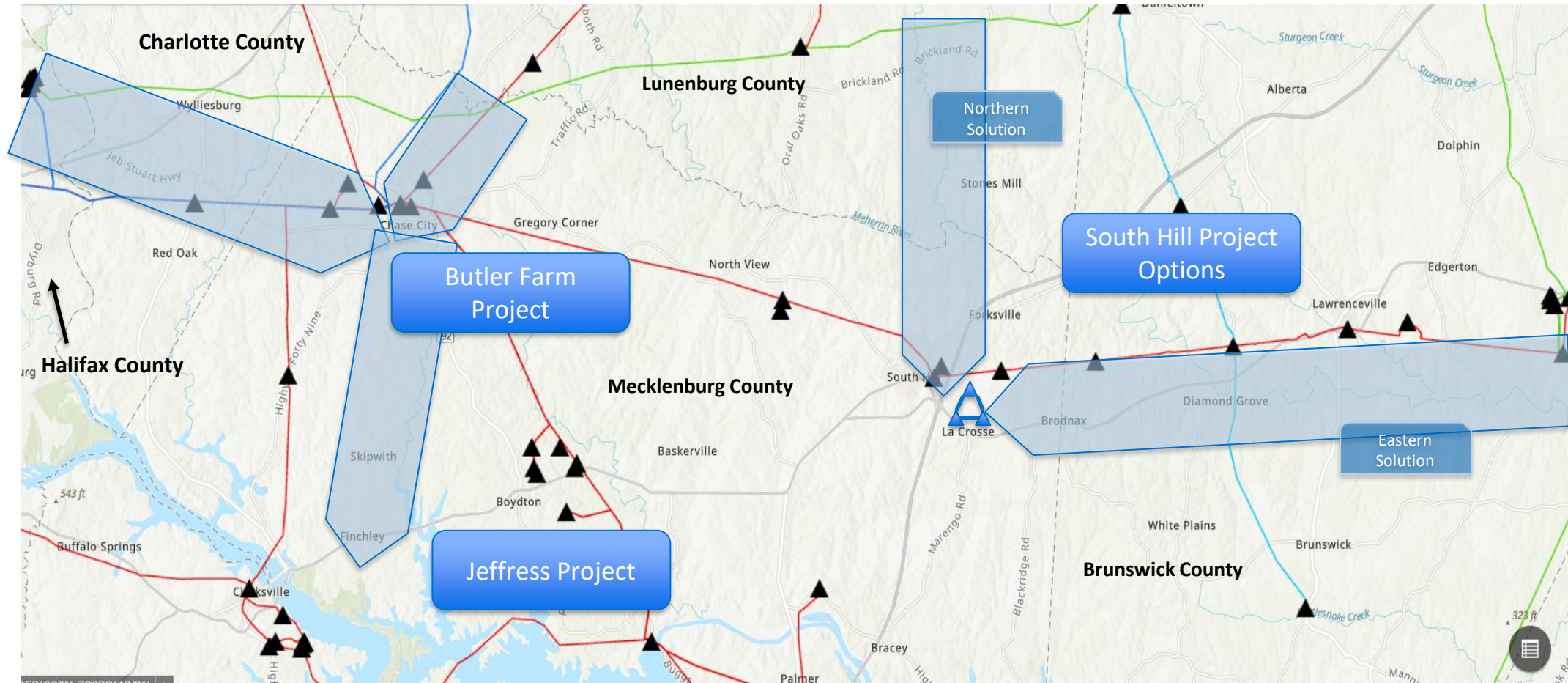
Forces Driving Infrastructure Need



Current System



Southside Infrastructure Enhancements Overview



South Hill Project Scope

Brunswick, Lunenburg, and Mecklenburg counties

- **Project Scope**

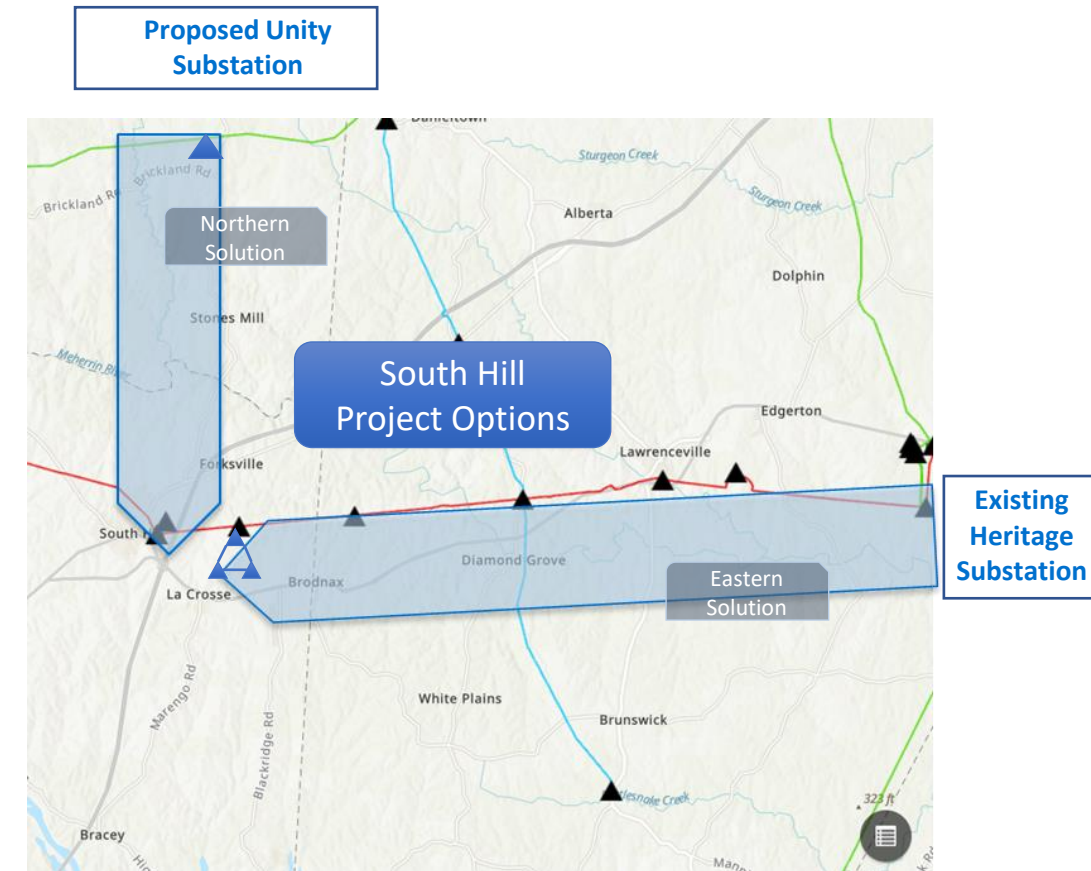
- Build two single-circuit 230 kV transmission lines parallel to one another on shared right of way into the South Hill/La Crosse areas
- Build three substations in South Hill/La Crosse
 - Build a connecting transmission line loop between the three proposed substations
 - Substations on data center property



South Hill Project Scope

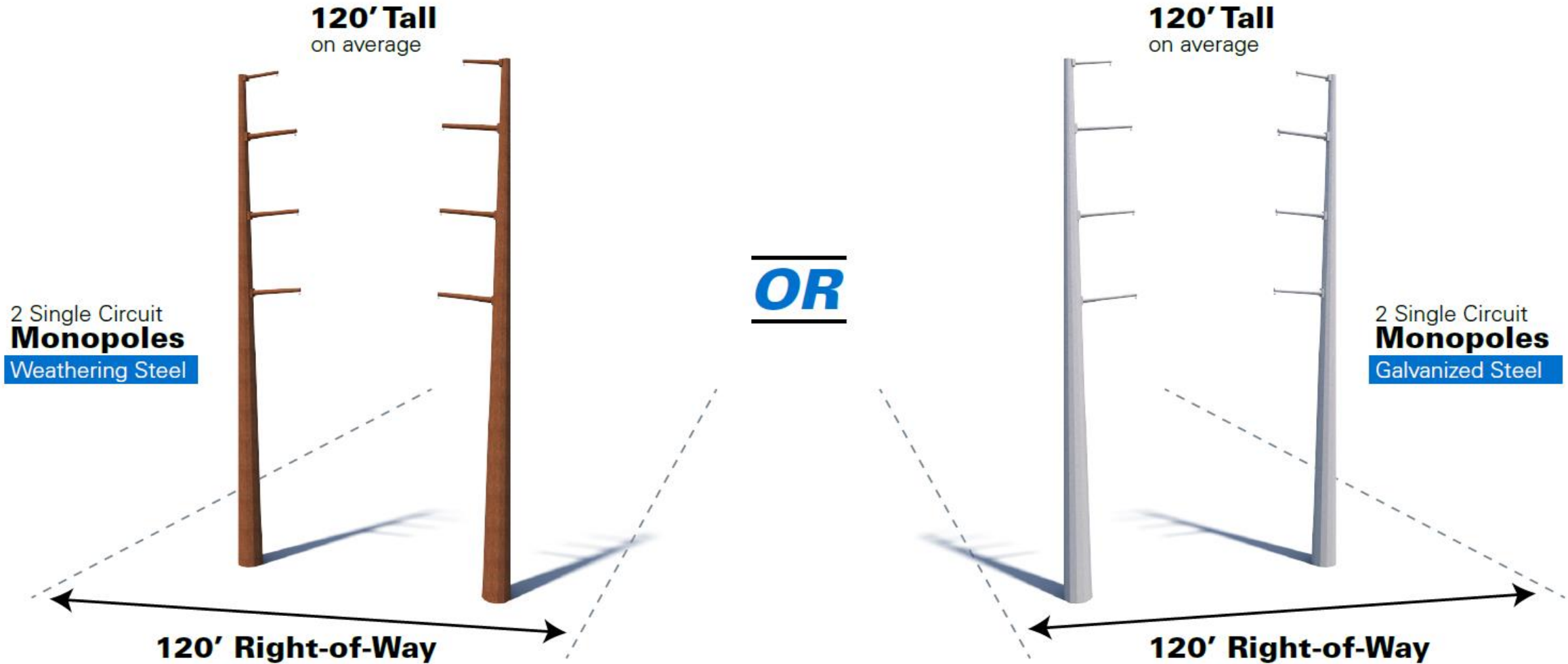
Brunswick, Lunenburg, and Mecklenburg counties

- **Electrical Options (only building one of these options at this time – multiple routes within each option)**
 - **Eastern Solution:** Expand the existing Heritage Substation (Brunswick County) and construct approximately 25 miles of new transmission line corridor partially co-located with our existing 115 kV right of way
 - **Northern Solution:** Build a new substation, Unity Substation, along our existing 500 kV line (Lunenburg County) and construct approximately 10 miles of new right of way
- **Right of way needs**
 - ~120 feet wide



South Hill Typical Structures

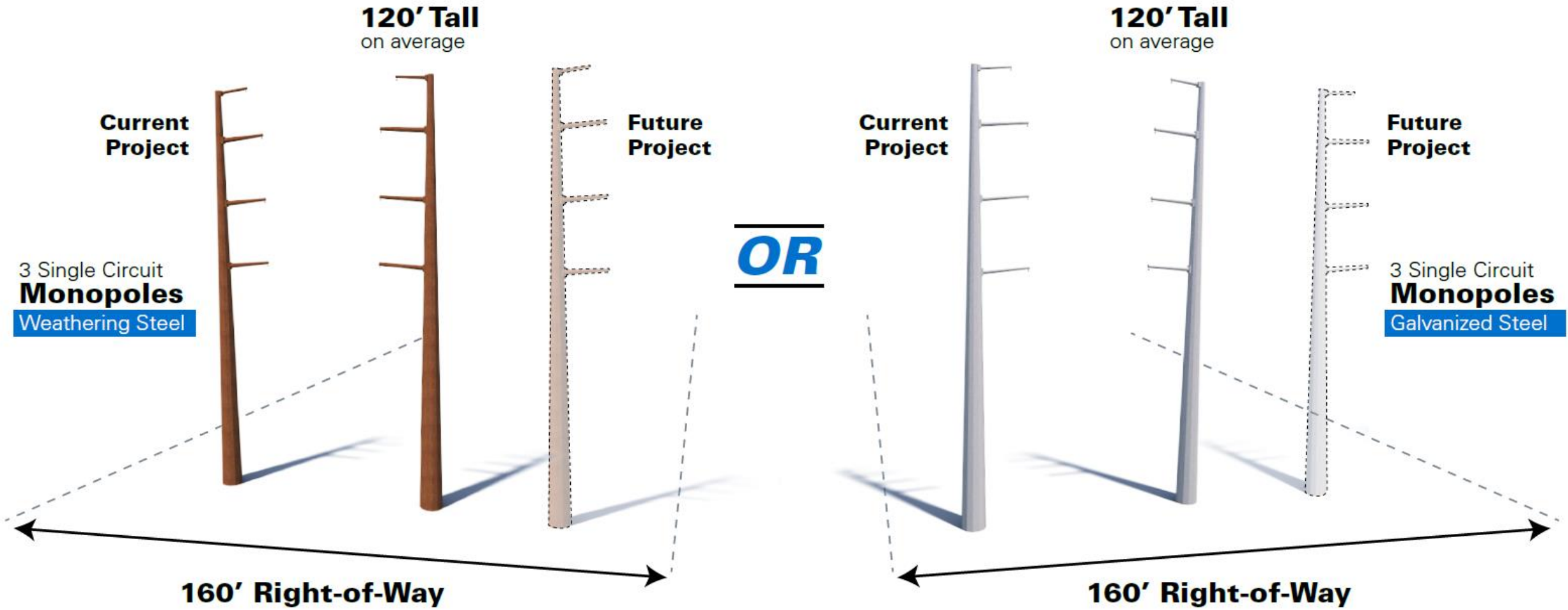
Eastern and Northern Solution



Visualization is for discussion purposes only. Final design is subject to change pending public, engineering, and regulatory review.

South Hill Typical Structures

Substation Interconnects - Eastern and Northern Solution



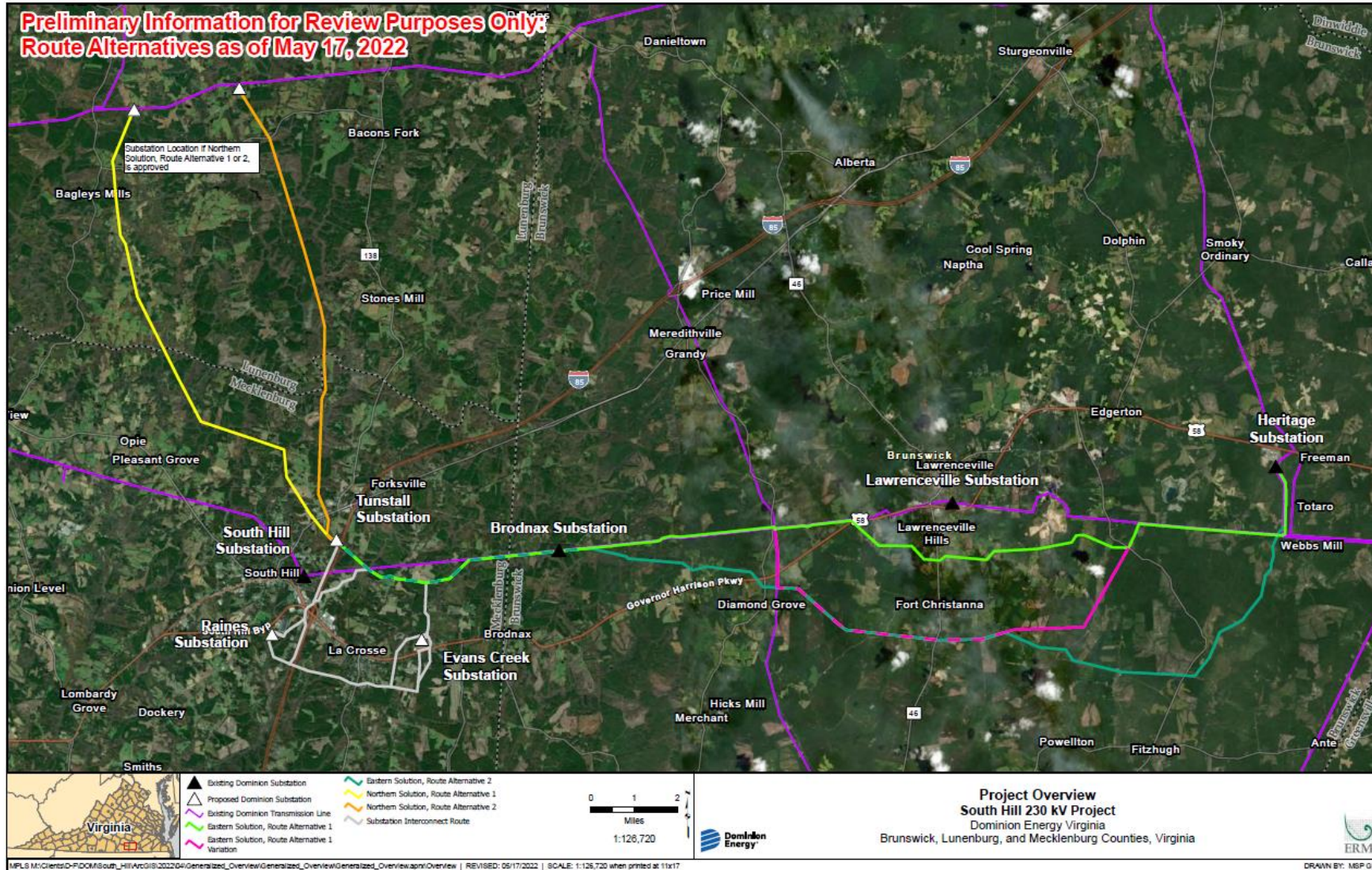
Visualization is for discussion purposes only. Final design is subject to change pending public, engineering, and regulatory review.

Foundational Principles

- Process always begins with review of existing rights of way
- Respect the land use of the property owners
- Co-locate with other infrastructure, where appropriate
- Stay close to property boundaries
- Minimize impact on private property, and environmental, historic, cultural and scenic resources



Route Options





Existing Conditions



Proposed Conditions

South Hill

Transmission Line Project

Aerial Rendering 1

Northern Solution

Typical Structure:

120' - 2 Single Circuit
Monopoles

Right-of-Way Width:

120 Feet

Structure Material:

Weathering Steel

Viewing Direction:

Southeast

Visualization is for discussion purposes only.
Final design is subject to change pending public,
engineering, and regulatory review.





Existing Conditions



Proposed Conditions

South Hill

Transmission Line Project

Aerial Rendering 1

Northern Solution

Typical Structure:

120' - 2 Single Circuit
Monopoles

Right-of-Way Width:

120 Feet

Structure Material:

Galvanized Steel

Viewing Direction:

Southeast

Visualization is for discussion purposes only.
Final design is subject to change pending public,
engineering, and regulatory review.





Existing Conditions



Proposed Conditions

South Hill

Transmission Line Project

Aerial Rendering 2

Eastern Solution

Typical Structure:

120' - 2 Single Circuit
Monopoles

Right-of-Way Width:

120 Feet

Structure Material:

Weathering Steel

Viewing Direction:

Northeast

Visualization is for discussion purposes only.
Final design is subject to change pending public,
engineering, and regulatory review.





Existing Conditions



Proposed Conditions

South Hill

Transmission Line Project

Aerial Rendering 2

Eastern Solution

Typical Structure:

120' - 2 Single Circuit Monopoles

Right-of-Way Width:

120 Feet

Structure Material:

Galvanized Steel

Viewing Direction:

Northeast

Visualization is for discussion purposes only.
Final design is subject to change pending public,
engineering, and regulatory review.





Existing Conditions



Proposed Conditions

South Hill

Transmission Line Project

Ground Rendering

Eastern & Northern Solution

Typical Structure:

120' - 2 Single Circuit
Monopoles

Right-of-Way Width:

120 Feet

Structure Material:

Weathering Steel

Viewing Direction:

West

Visualization is for discussion purposes only.
Final design is subject to change pending public,
engineering, and regulatory review.





Existing Conditions



Proposed Conditions

South Hill

Transmission Line Project

Ground Rendering

Eastern & Northern Solution

Typical Structure:

120' - 2 Single Circuit Monopoles

Right-of-Way Width:

120 Feet

Structure Material:

Galvanized Steel

Viewing Direction:

West

Visualization is for discussion purposes only.
Final design is subject to change pending public,
engineering, and regulatory review.





Existing Conditions



Proposed Conditions

South Hill

Transmission Line Project

Aerial Rendering 3

Substation Interconnects Solution

Typical Structure:

120' - 3 Single Circuit Monopoles

Right-of-Way Width:

160 Feet

Structure Material:

Weathering Steel

Viewing Direction:

East

Visualization is for discussion purposes only. Final design is subject to change pending public, engineering, and regulatory review.





Existing Conditions



Proposed Conditions

South Hill

Transmission Line Project

Aerial Rendering 3

Substation Interconnects Solution

Typical Structure:

120' - 3 Single Circuit
Monopoles

Right-of-Way Width:

160 Feet

Structure Material:

Galvanized Steel

Viewing Direction:

East

Visualization is for discussion purposes only.
Final design is subject to change pending public,
engineering, and regulatory review.



- **Virginia State Corporation Commission (SCC):** Certificate of Public Convenience and Necessity
 - Alternatives Analysis
 - Routing Study
 - Department of Environmental Quality Supplement and coordinated review
- **U.S. Army Corps of Engineers**
- **Other Agency Review**
 - Department of Environmental Quality (DEQ)
 - Virginia Marine Resources Commission (VMRC)
 - Virginia Department of Transportation (VDOT)
- **Local Permitting Requirements**
 - Substations on Data Center property/part of developer's site plans
 - New Unity 500 kV/230 kV Substation for South Hill Northern electrical solution

Transmission Line Planning and Public Engagement Process

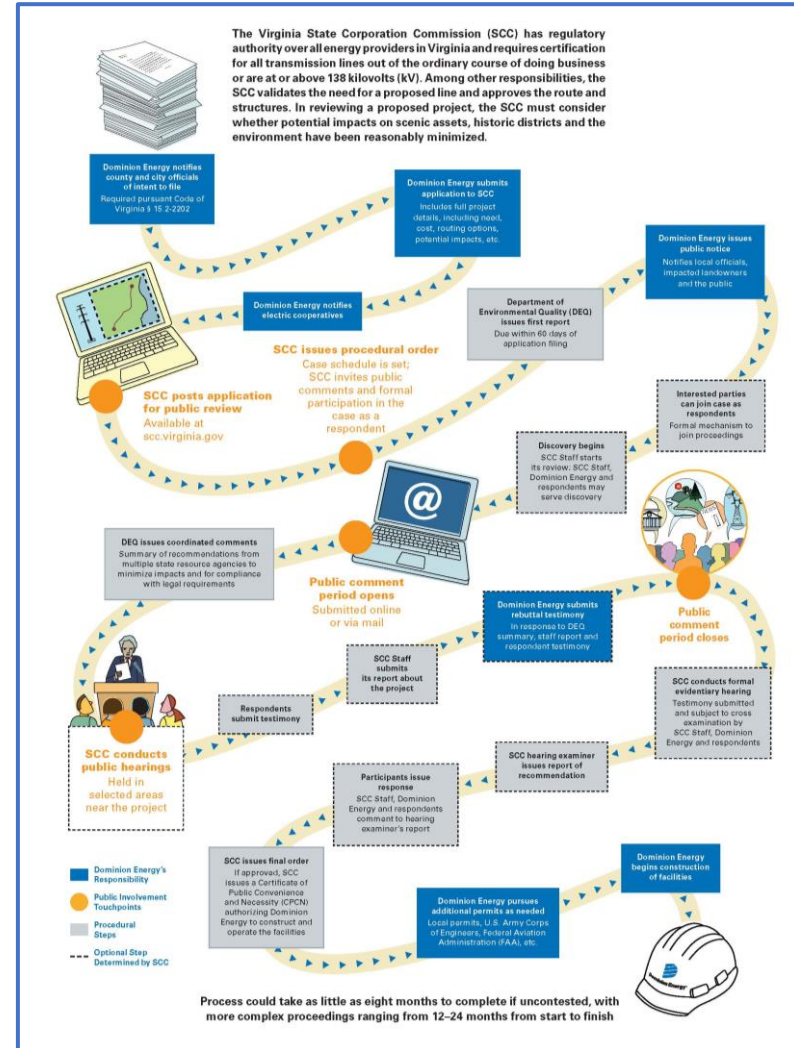
SCC Application



Opportunities for public involvement throughout the process, including public hearings

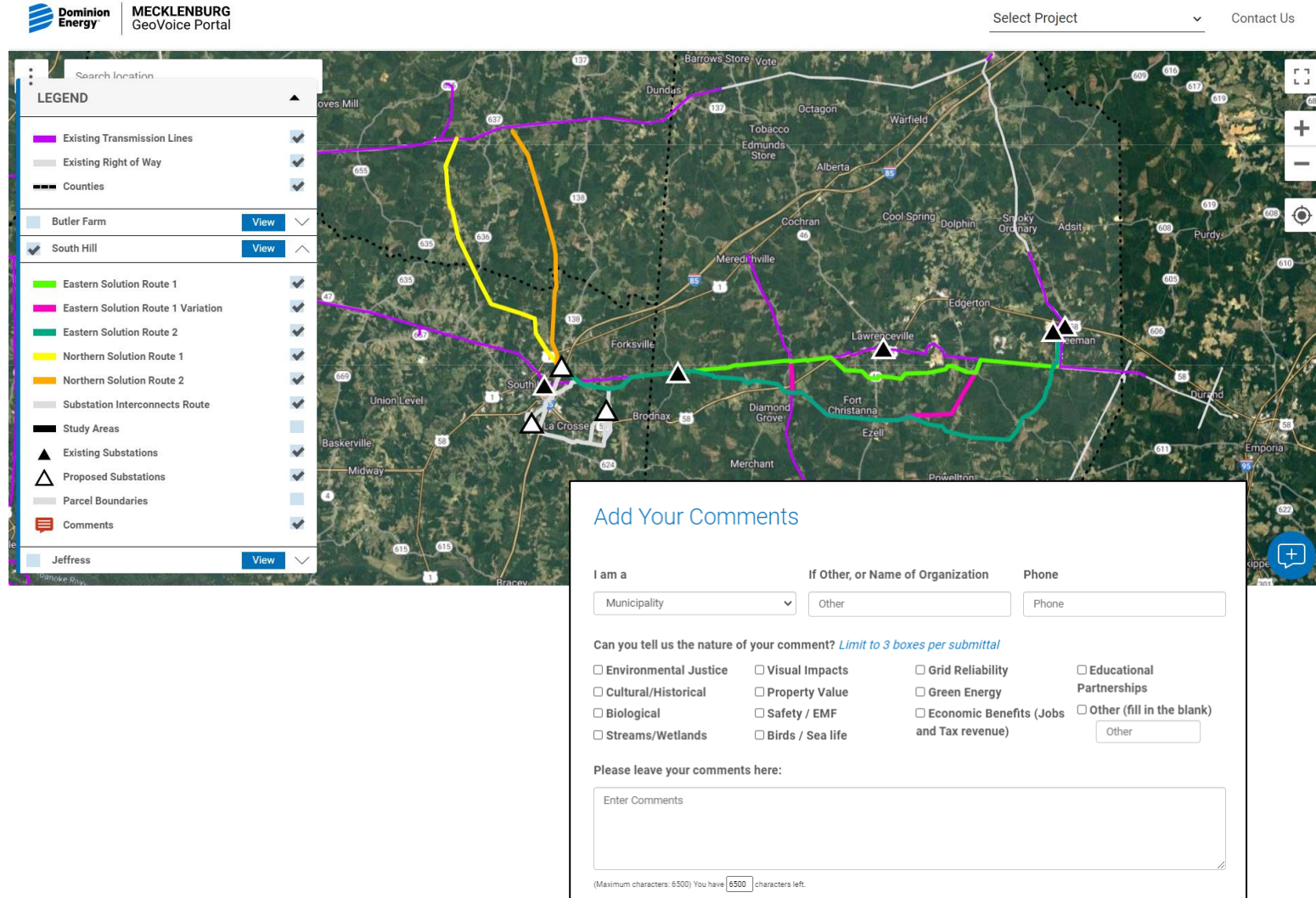


Process could take as little as eight months to complete if uncontested, with more complex proceedings ranging from 12–24 months from start to finish



[DominionEnergy.com/southhill](https://www.dominionenergy.com/southhill)

- Review the study areas
- Interactive mapping tool
- Evolves as routing options become available and are refined
- Add comments, provide input or share insight
- Track project development and receive updates



MECKLENBURG GeoVoice Portal

Select Project ▼ Contact Us

Search Location

LEGEND

- Existing Transmission Lines
- Existing Right of Way
- Counties
- Butler Farm [View](#)
- South Hill [View](#)
- Jeffress [View](#)
- Eastern Solution Route 1
- Eastern Solution Route 1 Variation
- Eastern Solution Route 2
- Northern Solution Route 1
- Northern Solution Route 2
- Substation Interconnects Route
- Study Areas
- Existing Substations
- Proposed Substations
- Parcel Boundaries
- Comments

Add Your Comments

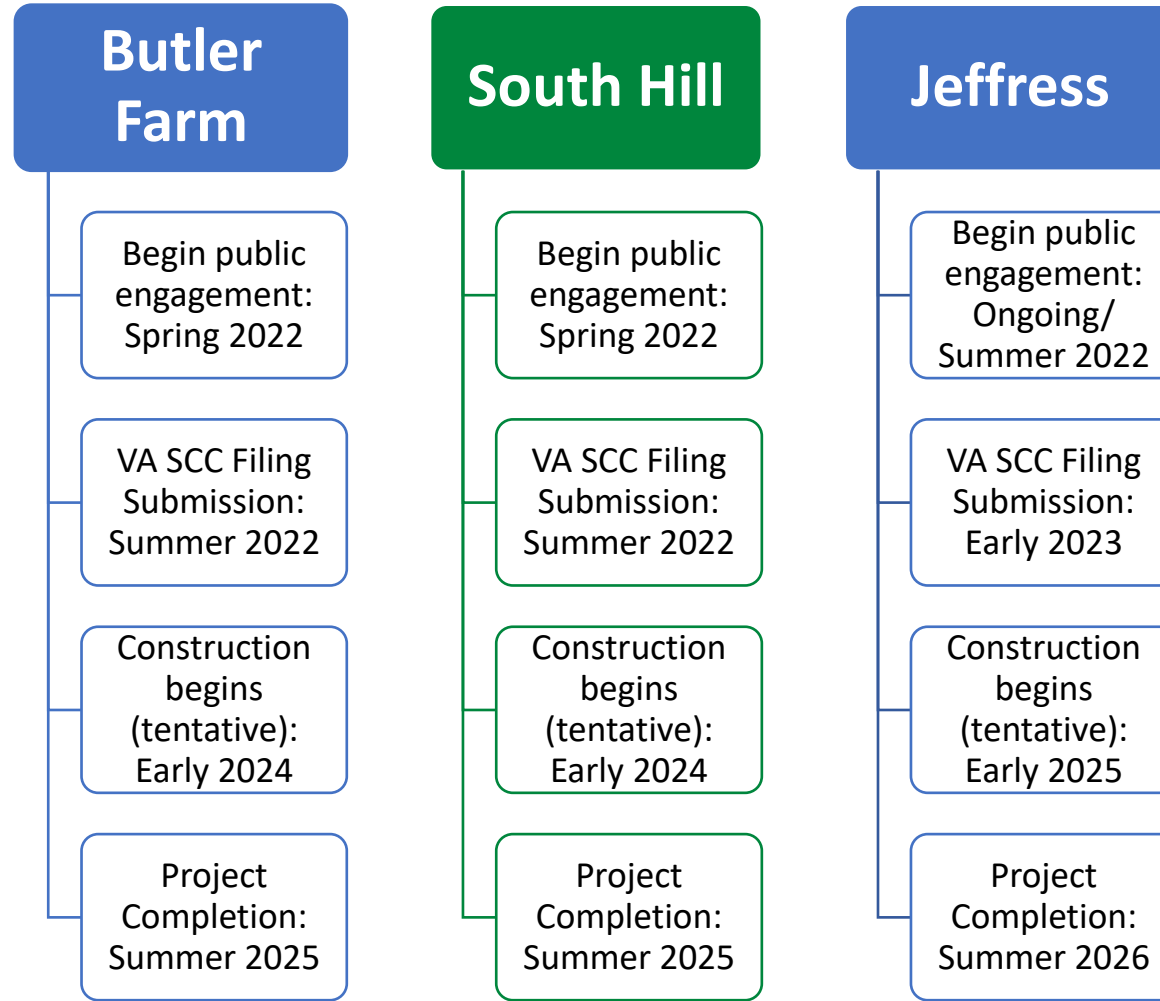
I am a If Other, or Name of Organization Phone

Can you tell us the nature of your comment? *Limit to 3 boxes per submittal*

<input type="checkbox"/> Environmental Justice	<input type="checkbox"/> Visual Impacts	<input type="checkbox"/> Grid Reliability	<input type="checkbox"/> Educational Partnerships
<input type="checkbox"/> Cultural/Historical	<input type="checkbox"/> Property Value	<input type="checkbox"/> Green Energy	<input type="checkbox"/> Other (fill in the blank)
<input type="checkbox"/> Biological	<input type="checkbox"/> Safety / EMF	<input type="checkbox"/> Economic Benefits (Jobs and Tax revenue)	<input type="text" value="Other"/>
<input type="checkbox"/> Streams/Wetlands	<input type="checkbox"/> Birds / Sea life		

Please leave your comments here:

(Maximum characters: 6500) You have 6500 characters left.



What's Next?

- Review routing options and speak to subject matter experts
- Another in-person community meeting later this summer once public input is received and incorporated into project planning
- For questions throughout the project, send an email to powerline@dominionenergy.com or call **888-291-0190**
- For more information and to access GeoVoice, please visit: [DominionEnergy.com/southhill](https://www.dominionenergy.com/southhill)



Thank you for joining!