



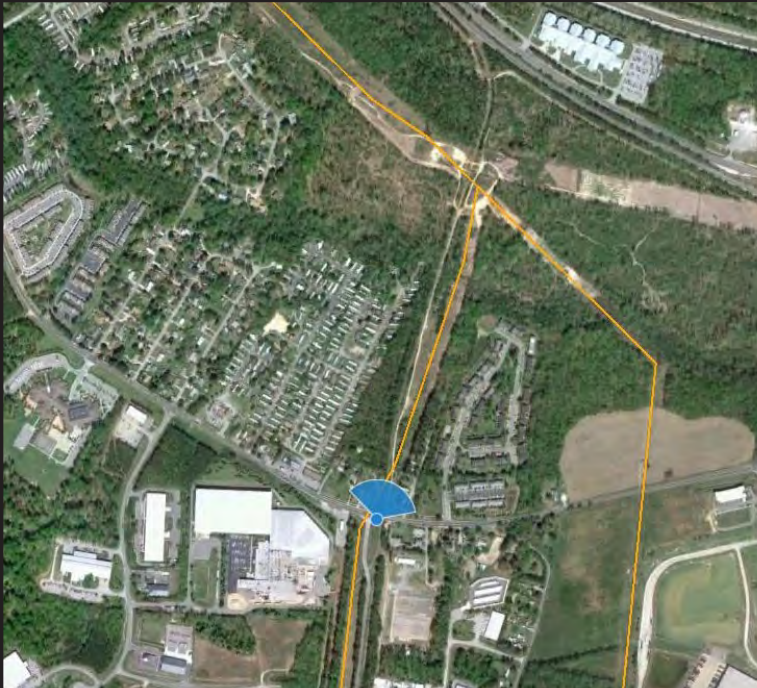
**Viewpoint 14** - State Route 60 (Pocahontas Trail) - Looking Northeast - **Proposed View**



Surry-Skiffes Creek 500 kV Transmission Line  
Skiffes Creek-Wheaton 230 kV Transmission Line  
Skiffes Creek 500-230-115 kV Switching Station

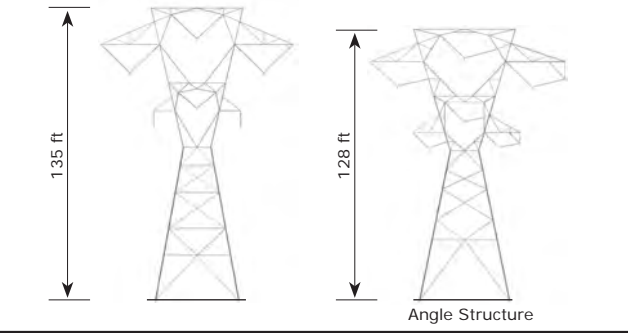
**Viewpoint 14**  
State Route 60 (Pocahontas Trail)  
- Looking Northeast  
  
Proposed View

● Viewpoint Location  
— Transmission Line

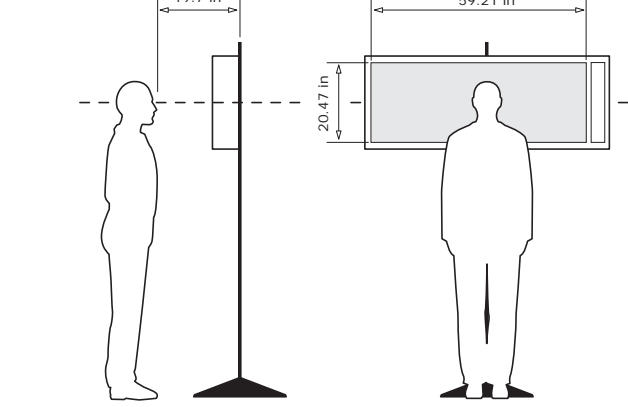


Easting Position (Virginia South Zone, NAD 83): 12033637.9  
Northing Position (Virginia South Zone, NAD 83): 3604410.7  
Elevation of Viewpoint Position (NAD 83 / ft): 48.3  
Height of Camera Above Ground (ft): 5.4  
Date of Photography: 7th February 2012 at 9:08 a.m.  
Orientation of View: NE  
Horizontal Field of View: 124°  
Vertical Field of View: 55°

3D Model Data Proposed Structure Types



Correct Viewing of TrueView™  
Photosimulations



NOTES:  
Viewpoint locations have been precision surveyed by  
**Dominion Virginia Power**  
Coordinator - Survey Services  
Larry Hedberg, L.S.  
701 East Cary Street  
Richmond, Va. 23219  
  
No part of this photosimulation shall be altered in any way.  
Visual Assessments should be made from the full size TrueView™ only.

Photosimulation Created Using  
TrueView™2 Technology  
  
PROVIDED BY  
**TRUESCAPE**  
VISUAL COMMUNICATION  
www.truescape.com

DATE: May 28, 2012

Tower placement in simulations is preliminary - final tower locations may change upon final design and survey