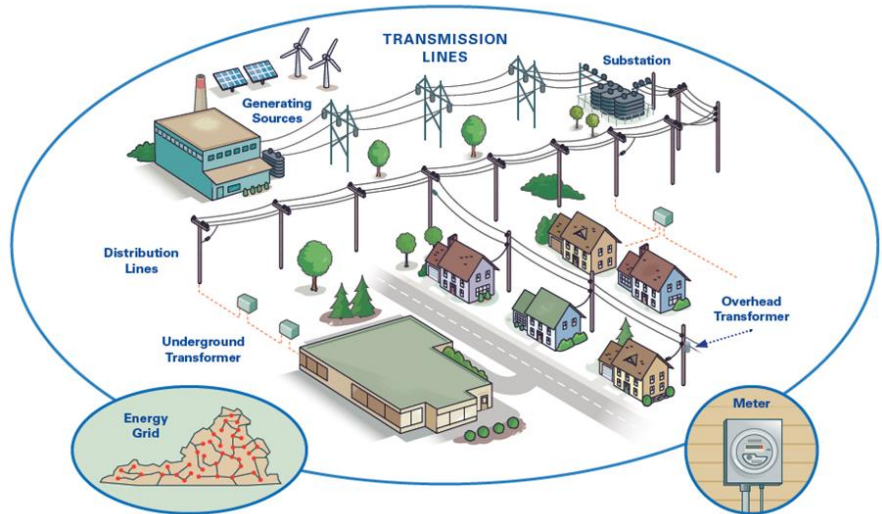


Substations: A Vital Role in the Energy Grid

Transmission lines move energy from power stations to substations. Power stations, — fueled by natural gas, wind, solar or other sources — make energy.

Substations take that energy and either lower or increase the voltage so distribution lines can safely carry the energy to homes and businesses.

Transmission lines are connected and work together to form what we call the **energy grid**.



Transmission Lines

Electric transmission lines are the tall high-voltage lines that carry electricity over long distances, such as from a power station to a city.



Distribution Lines

Distribution lines carry electricity or energy to homes and businesses.



For more information about our electric transmission practices, view informational videos and documents on our virtual open house page at powerlines101.dominionenergy.com.