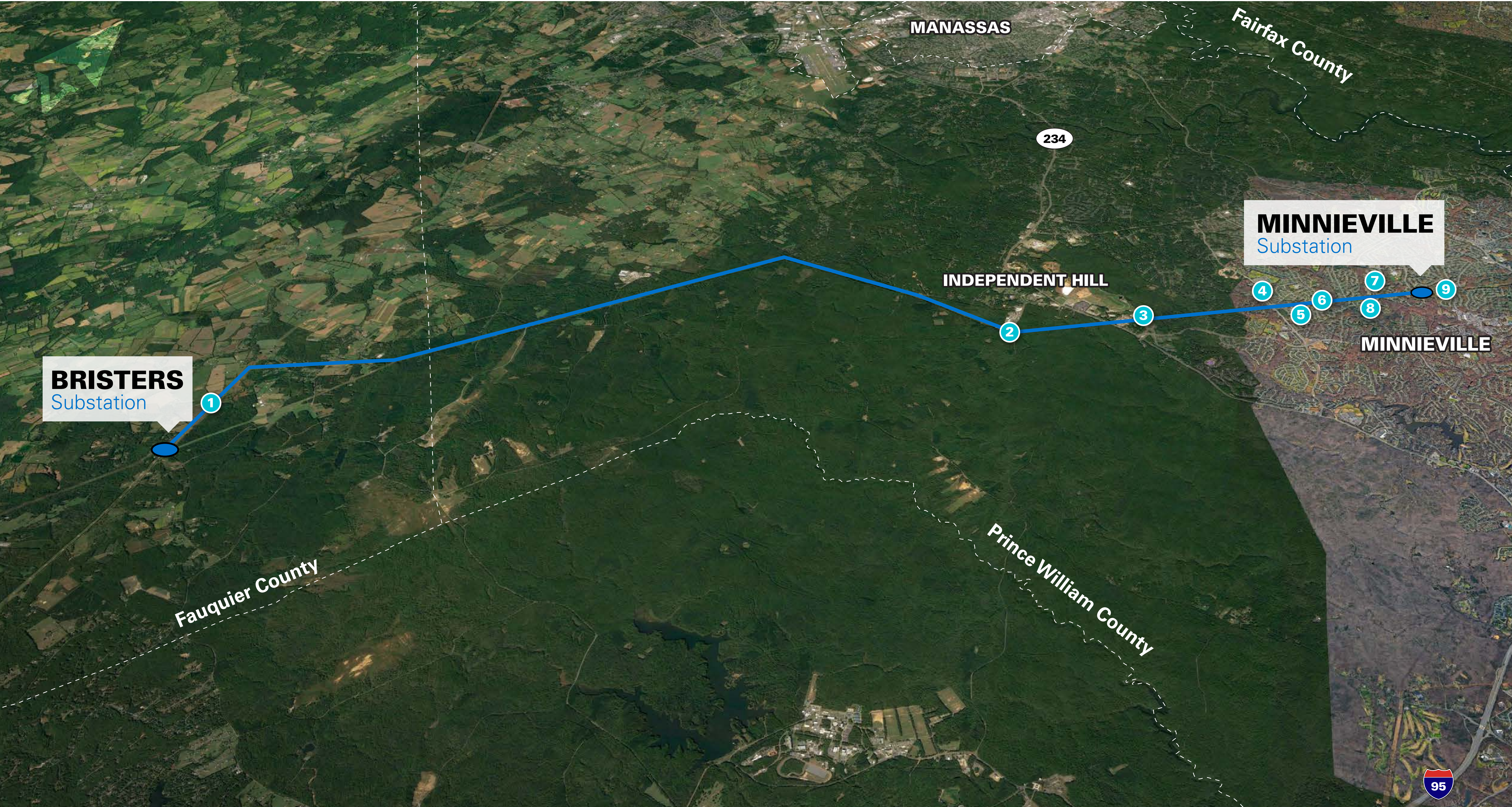


BRISTERS - MINNIEVILLE

Transmission Line Rebuild Project

Photo Location Map

① Photo Location — Transmission Line Route





EXISTING CONDITIONS



PROPOSED CONDITIONS

RECONDUCTOR ONLY

BRISTERS MINNIEVILLE

Transmission Line Rebuild Project

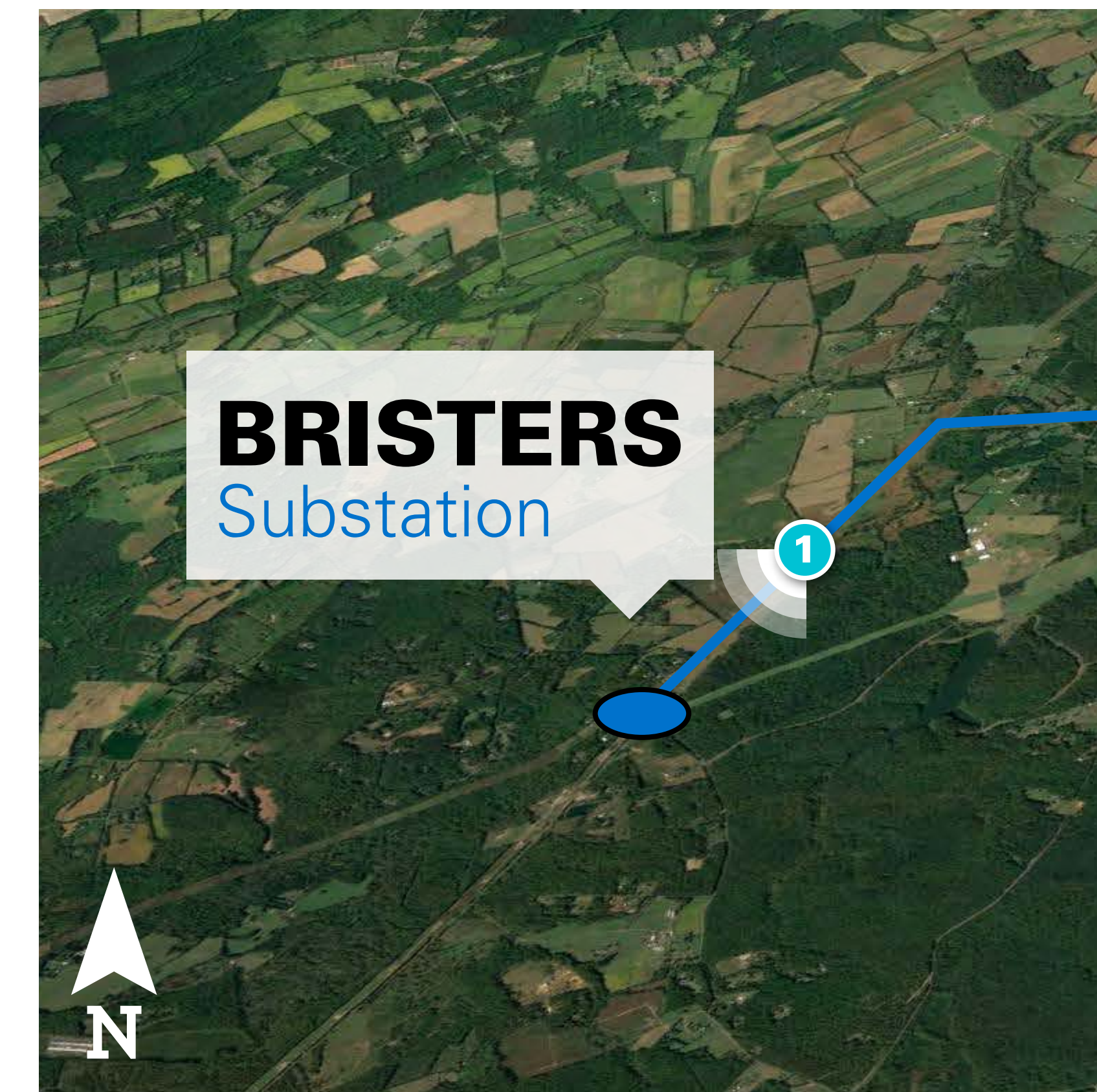
Photo Simulation 1

Date: 02/01/2022

Time: 11:21am

Viewing Direction:

Southwest from Cromwell Rd.

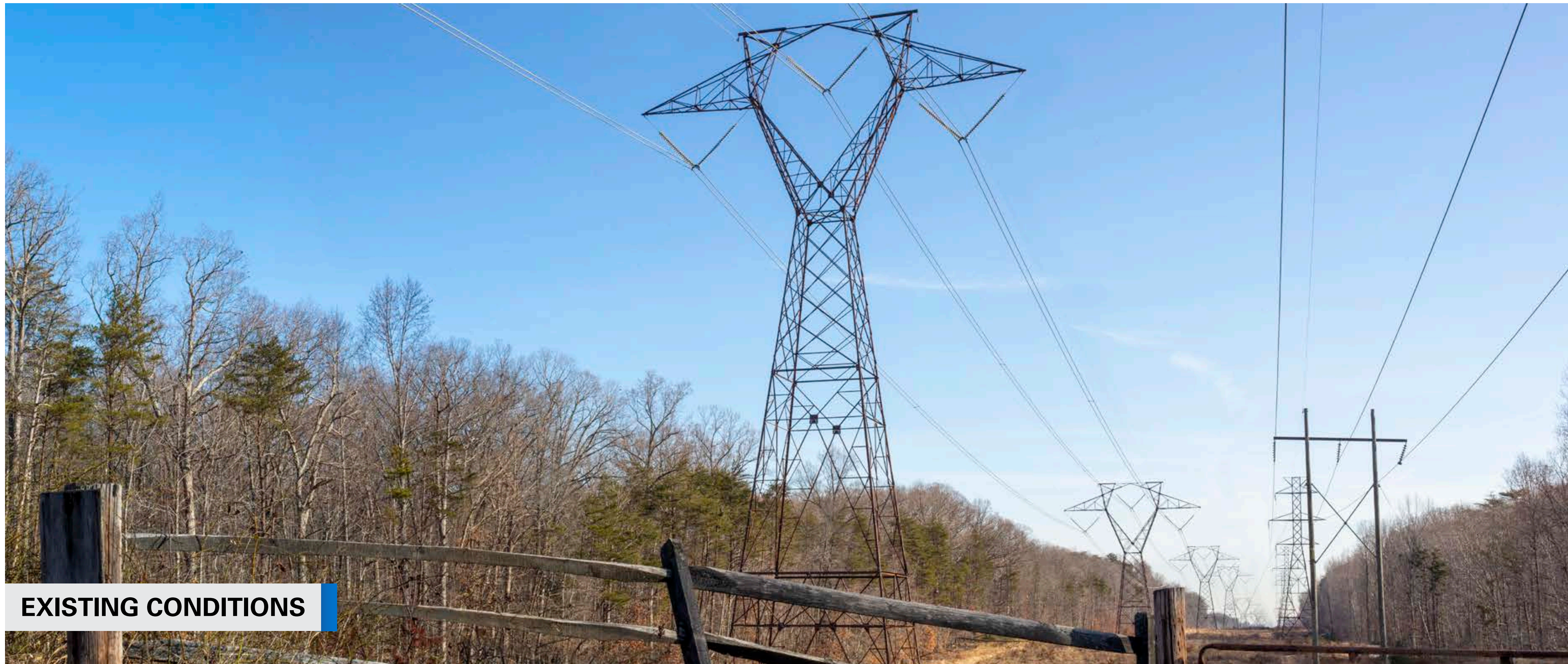


BRISTERS
Substation

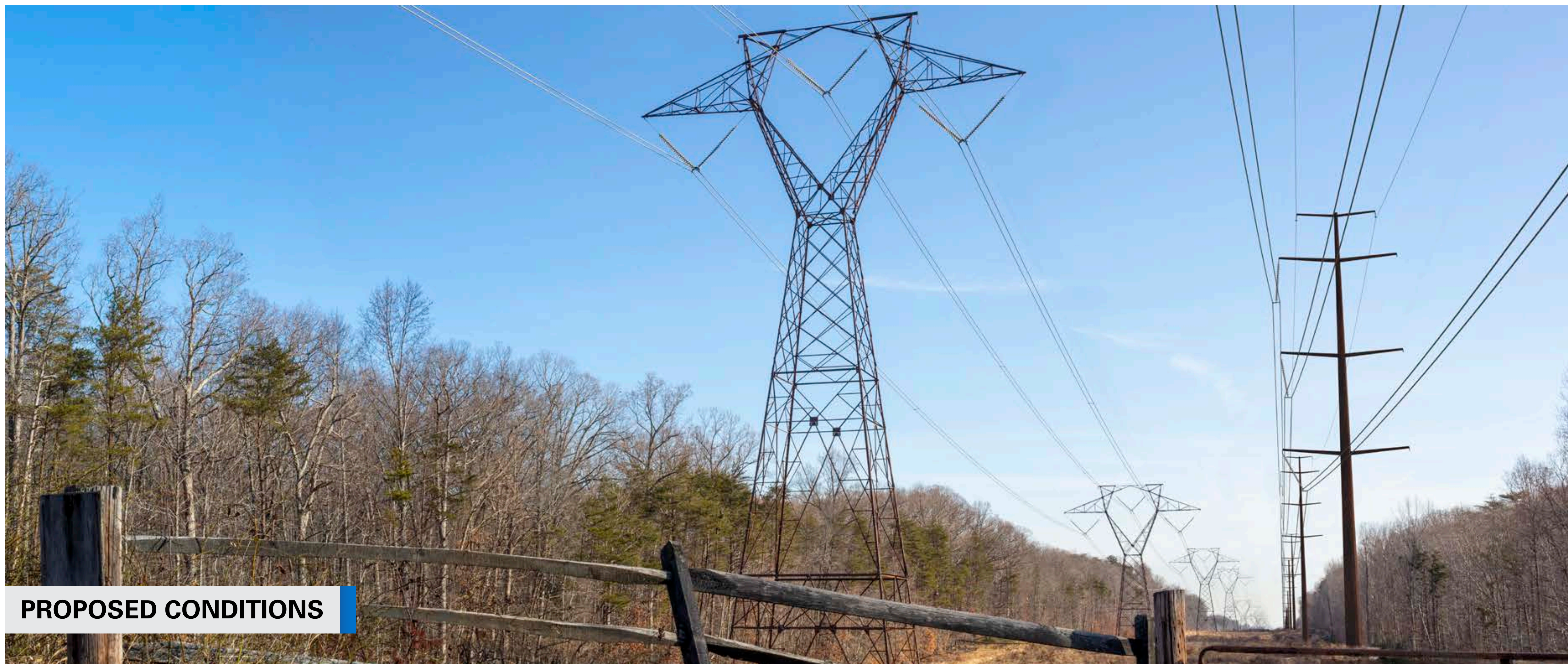


Photo Simulations are for discussion purposes only. Final design is subject to change pending public, engineering, and regulatory review.





EXISTING CONDITIONS



PROPOSED CONDITIONS

BRISTERS MINNIEVILLE

Transmission Line Rebuild Project

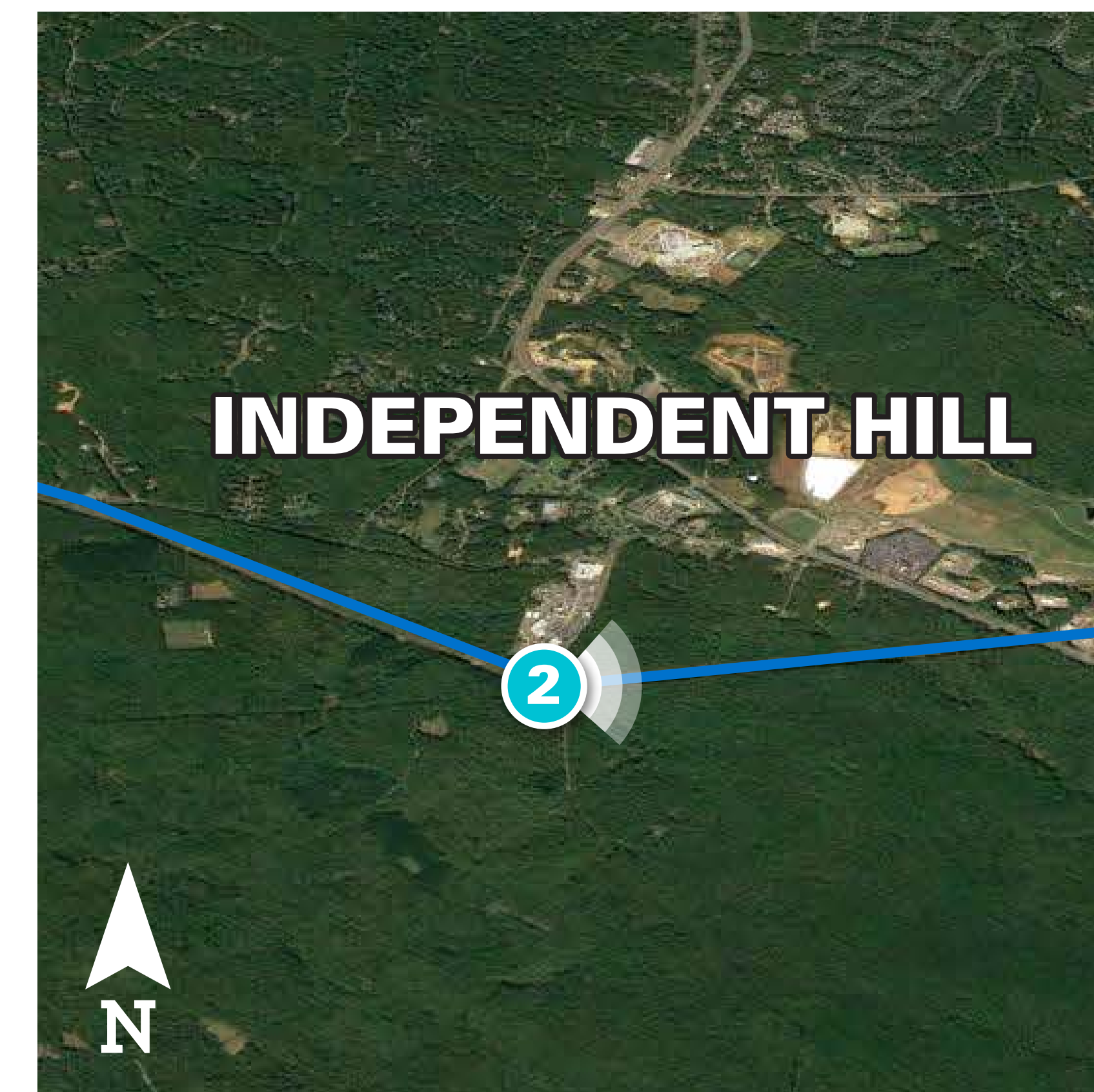
Photo Simulation 2

Date: 02/01/2022

Time: 9:52 am

Viewing Direction:

East from Joplin Rd



INDEPENDENT HILL

Photo Simulations are for discussion purposes only. Final design is subject to change pending public, engineering, and regulatory review.



BRISTERS MINNIEVILLE

Transmission Line Rebuild Project

Photo Simulation 3

Date: 02/01/2022

Time: 9:26 am

Viewing Direction:

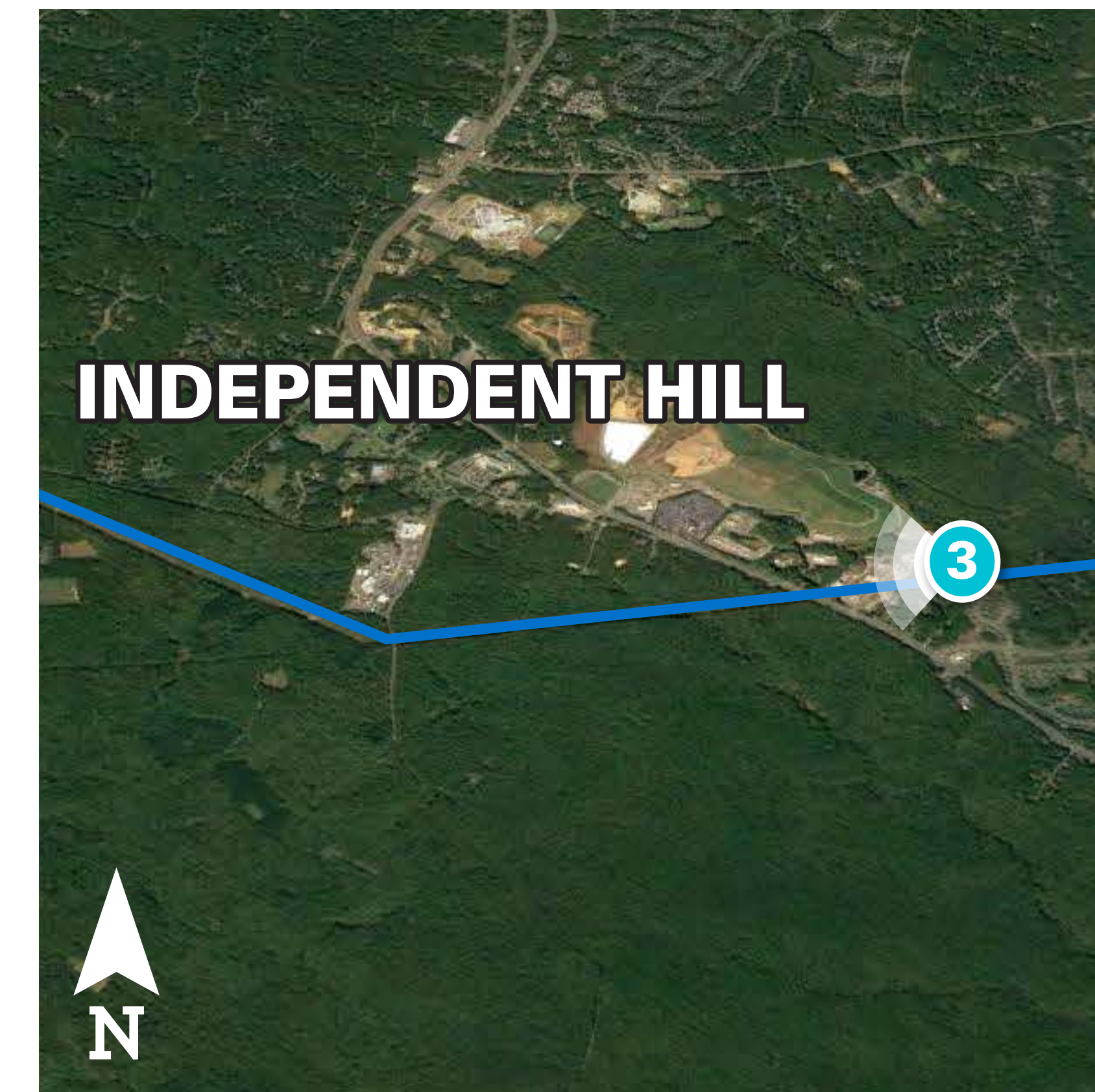
Southwest from East of Colchester Park Dr



EXISTING CONDITIONS



PROPOSED CONDITIONS



INDEPENDENT HILL

Photo Simulations are for discussion purposes only. Final design is subject to change pending public, engineering, and regulatory review.

BRISTERS MINNIEVILLE

Transmission Line Rebuild Project

Photo Simulation 4

Date: 01/31/2022

Time: 3:20 pm

Viewing Direction:
East from Spriggs Rd.



Photo Simulations are for discussion purposes only. Final design is subject to change pending public, engineering, and regulatory review.



EXISTING CONDITIONS



PROPOSED CONDITIONS

BRISTERS MINNIEVILLE

Transmission Line Rebuild Project

Photo Simulation 5

Date: 01/31/2022

Time: 2:02 pm

Viewing Direction:

Northwest from Shaw Ct

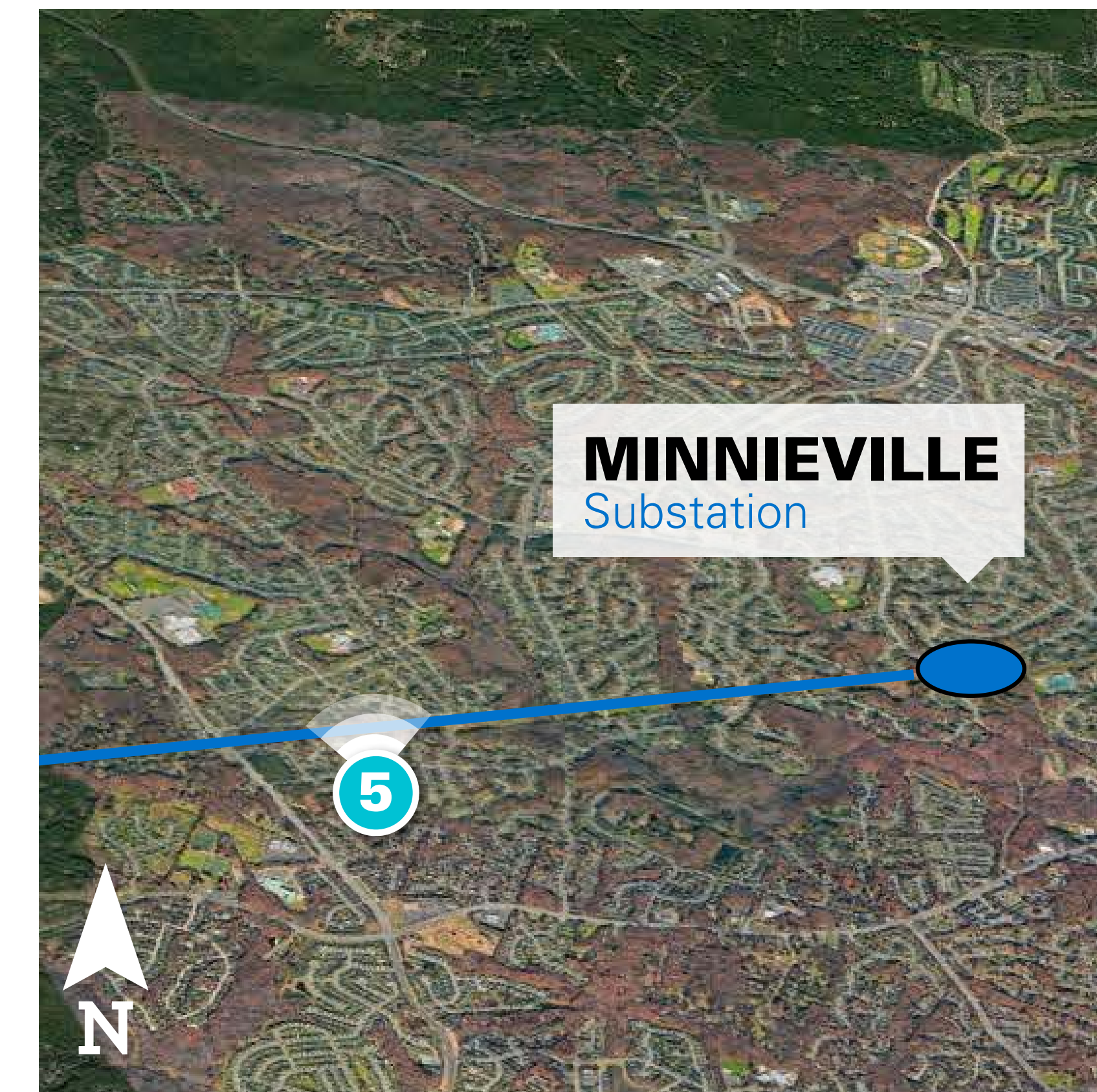


Photo Simulations are for discussion purposes only. Final design is subject to change pending public, engineering, and regulatory review.



BRISTERS MINNIEVILLE

Transmission Line Rebuild Project

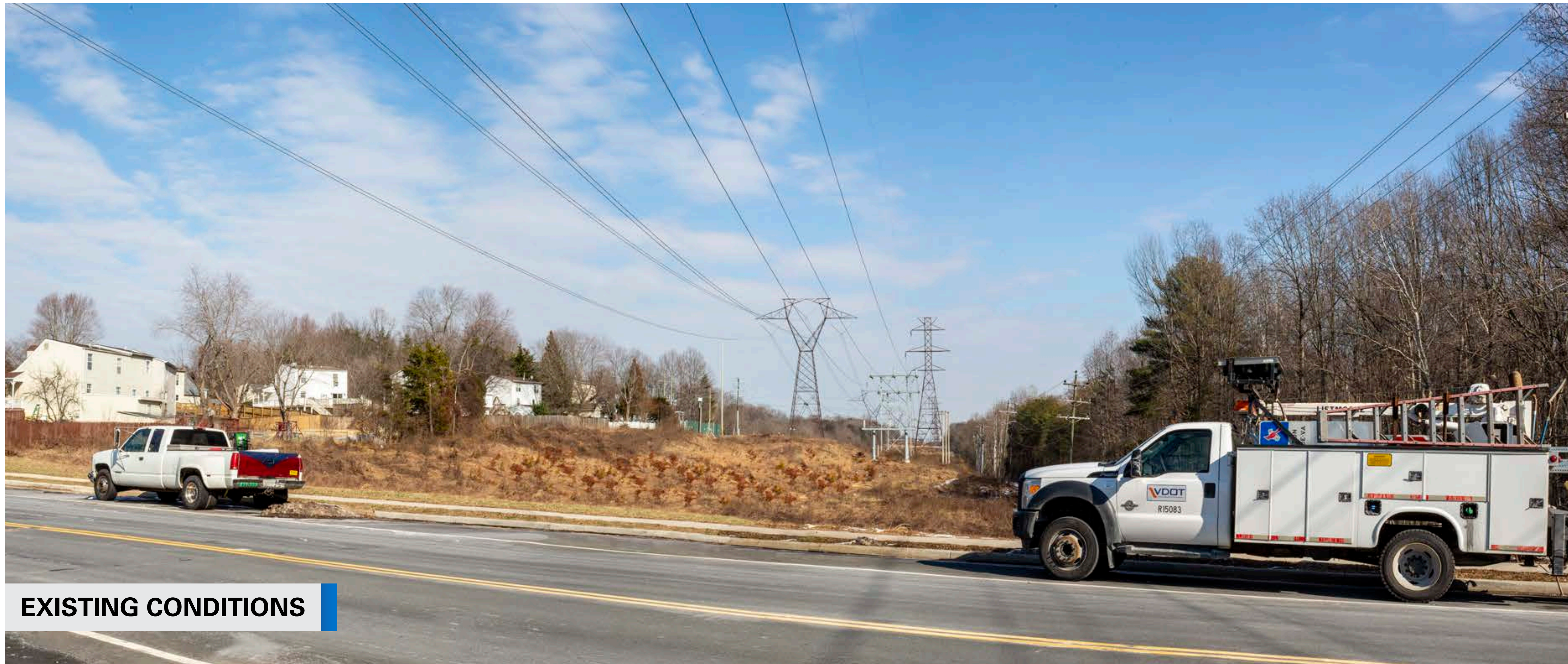
Photo Simulation 6

Date: 01/31/2022

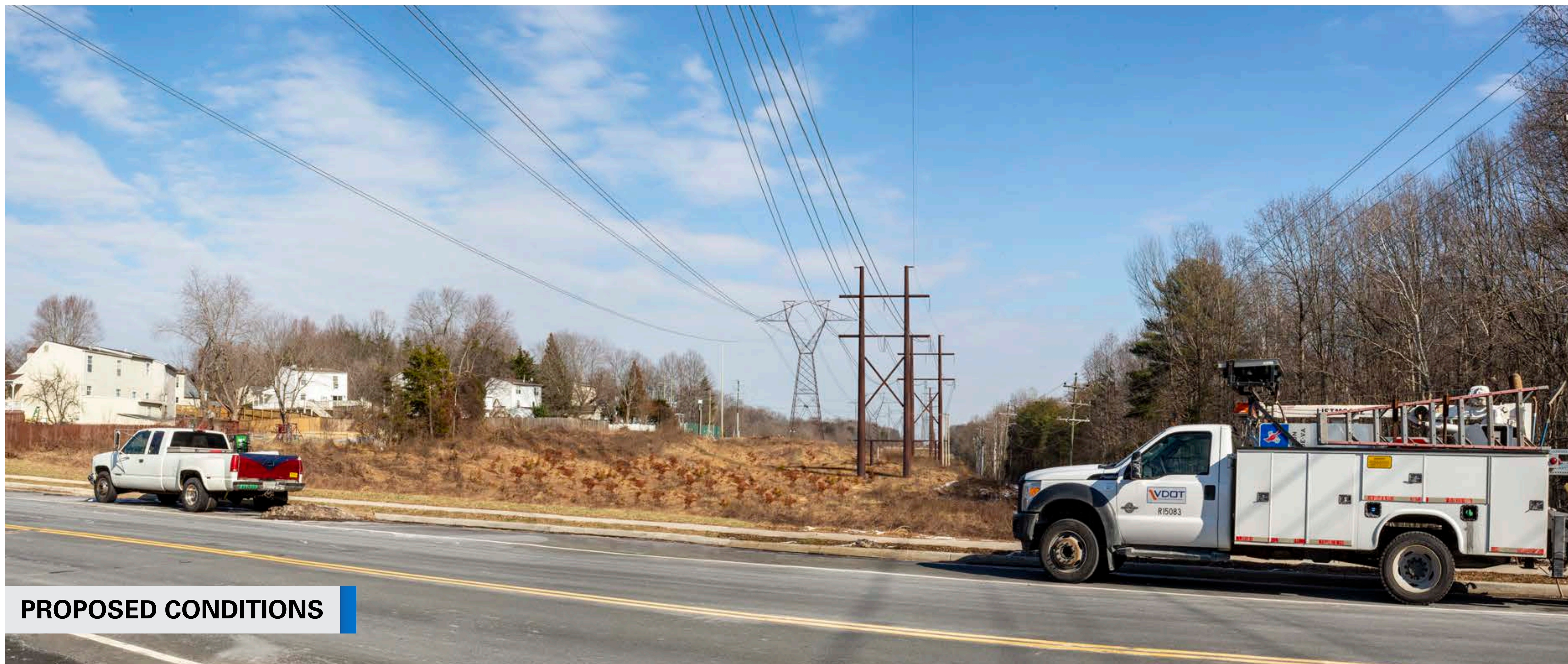
Time: 1:43 pm

Viewing Direction:

East from Princedale Dr



EXISTING CONDITIONS



PROPOSED CONDITIONS



Photo Simulations are for discussion purposes only. Final design is subject to change pending public, engineering, and regulatory review.

BRISTERS MINNIEVILLE

Transmission Line Rebuild Project

Photo Simulation 7

Date: 01/31/2022

Time: 12:53 pm

Viewing Direction:

South from Enterprise Elementary School



EXISTING CONDITIONS



PROPOSED CONDITIONS

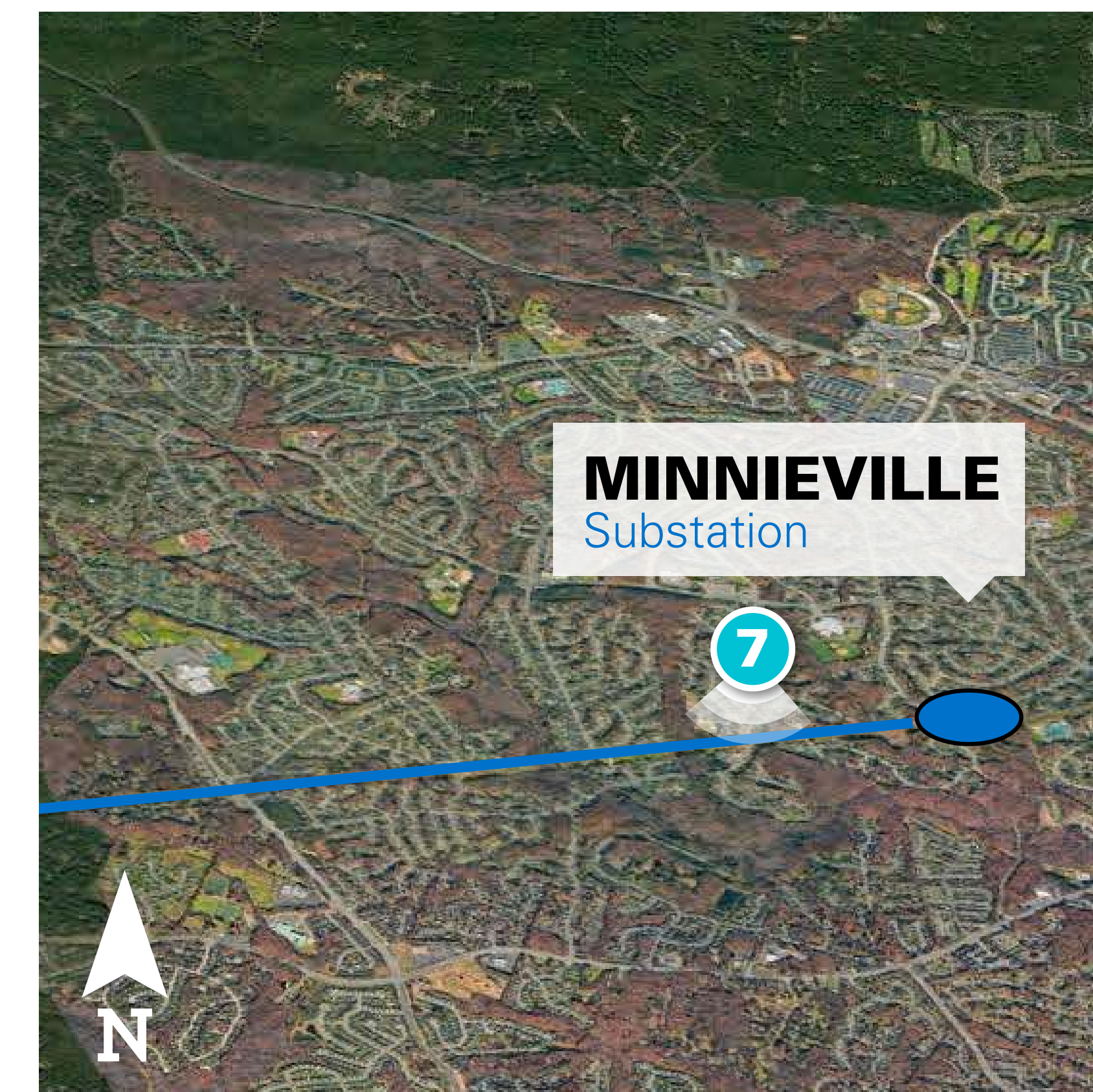


Photo Simulations are for discussion purposes only. Final design is subject to change pending public, engineering, and regulatory review.

BRISTERS MINNIEVILLE

Transmission Line Rebuild Project

Photo Simulation 8

Date: 01/31/2022

Time: 1:08 pm

Viewing Direction:

Northeast from Dale City Christian Church



EXISTING CONDITIONS



PROPOSED CONDITIONS



Photo Simulations are for discussion purposes only. Final design is subject to change pending public, engineering, and regulatory review.

BRISTERS MINNIEVILLE

Transmission Line Rebuild Project

Photo Simulation 9

Date: 01/31/2022

Time: 3:20 pm

Viewing Direction:

West from Minnieville Elementary School



EXISTING CONDITIONS



PROPOSED CONDITIONS

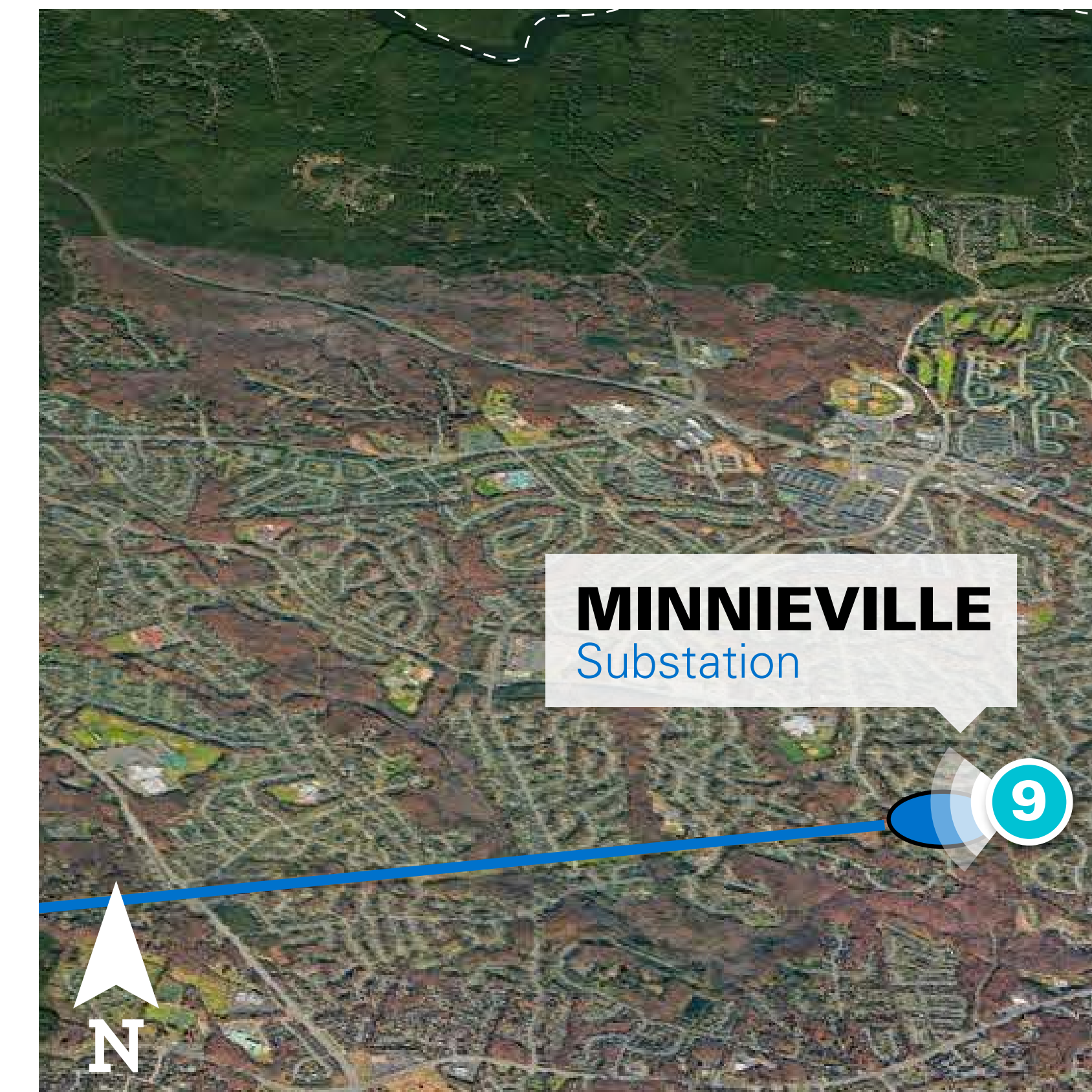


Photo Simulations are for discussion purposes only. Final design is subject to change pending public, engineering, and regulatory review.

