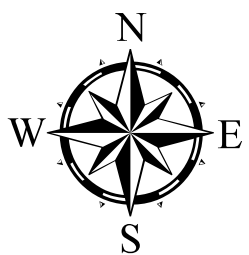


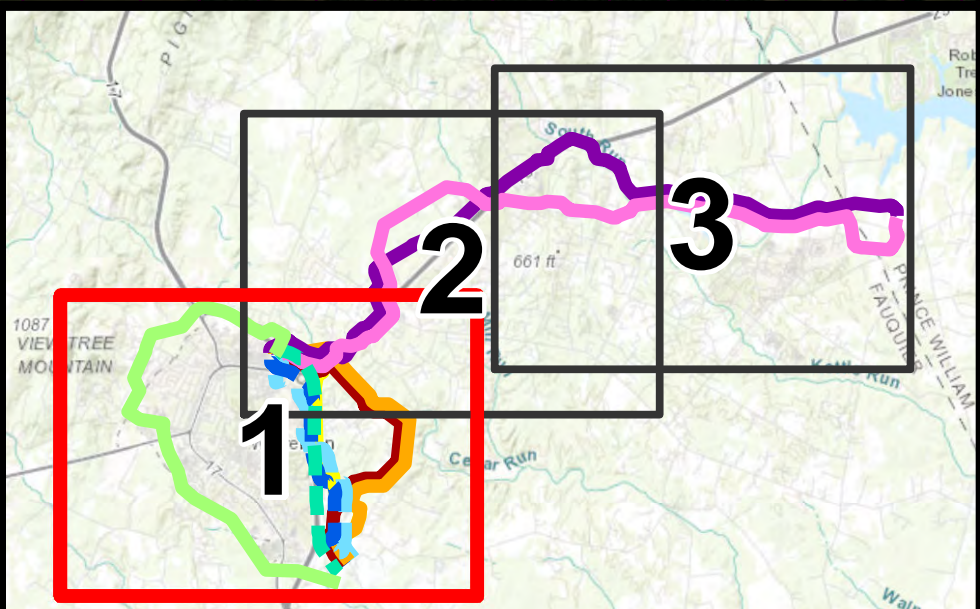
Figure 2
Cultural Resources
Map Set
Blackwell Rd 230 kV Transmission
Line and Substation Project
Fauquier and Prince William
Counties, Virginia
Page 1

- ▲ Existing Substation
- △ Proposed Substation or Transition Station
- Option 1, Overhead Route 1
- Option 1, Overhead Route 2
- Option 1, Overhead Route 3
- Option 1, Overhead Route 4
- Option 1, Underground Route 1
- Option 1, Underground Route 2
- Option 1, Underground Route 3
- Option 2, Overhead Route 1
- Option 2, Overhead Route 2
- Option 1, Overhead Route 1 Variation
- Option 1, Overhead Route 3 Variation
- Route Considered But Rejected
- Existing Dominion Transmission Line
- Town of Warrenton Municipal Boundary
- Journey Through Hallowed Ground National Scenic Byway
- DHR Easement
- Eligible and Listed Features**
- Architecture Resource
- Individual Historic District Property
- Afro-American Historical Association Data**
- Church
- Community
- School
- Battlefield**
- Buckland Mills
- Freeman's Ford
- Lee Springs
- Rappahannock Bridge
- Rappahannock Station I
- Waterloo Bridge
- White Sulphur Springs
- Historic District**
- Warrenton Country School
- Spings Valley Rural
- Warrenton Branch Railroad Rural
- Warrenton



0 900 1,800 2,700
Feet

1:10,800



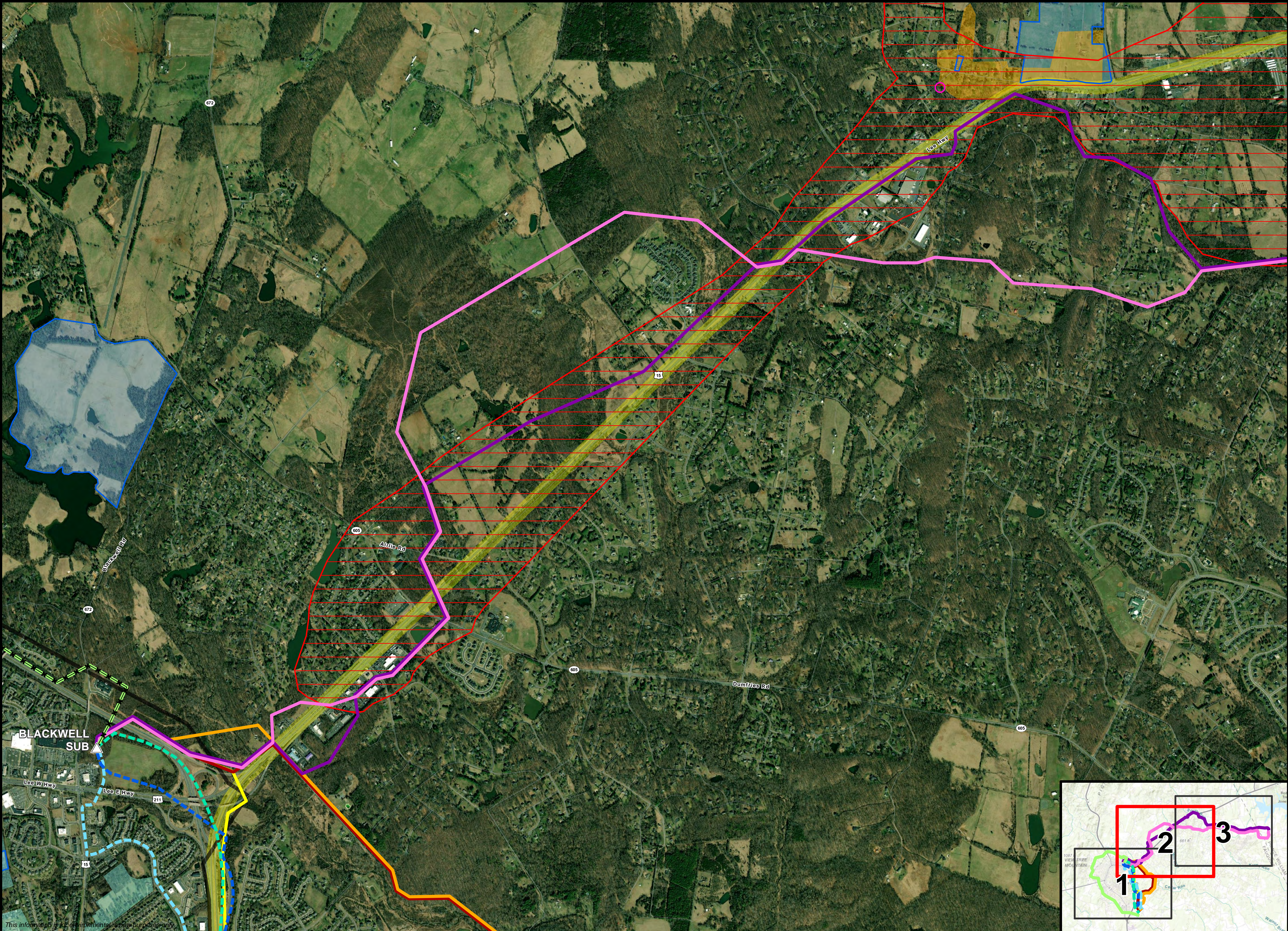
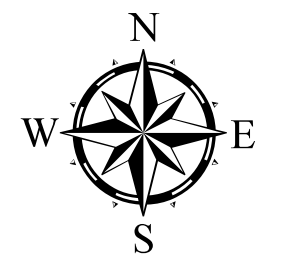
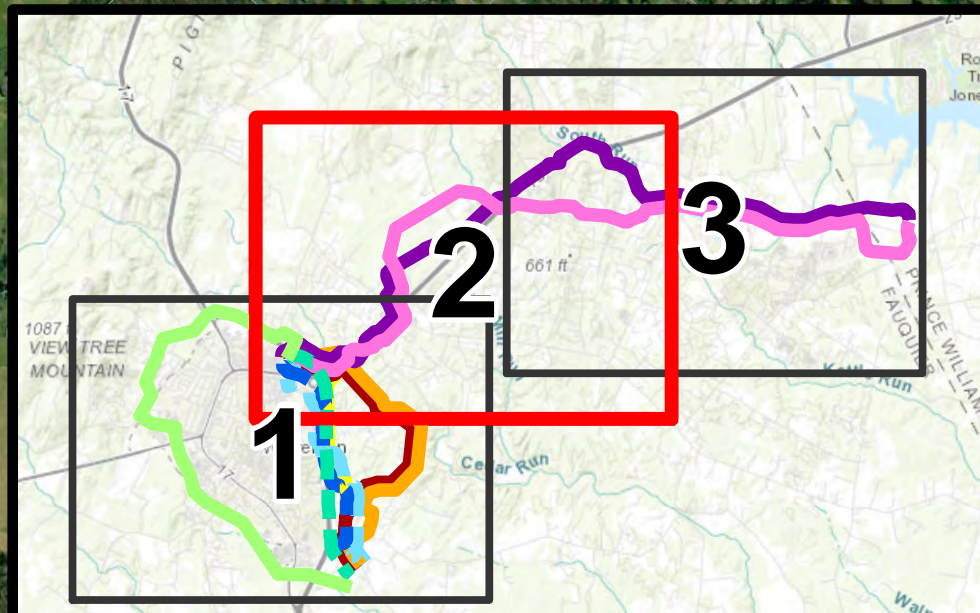


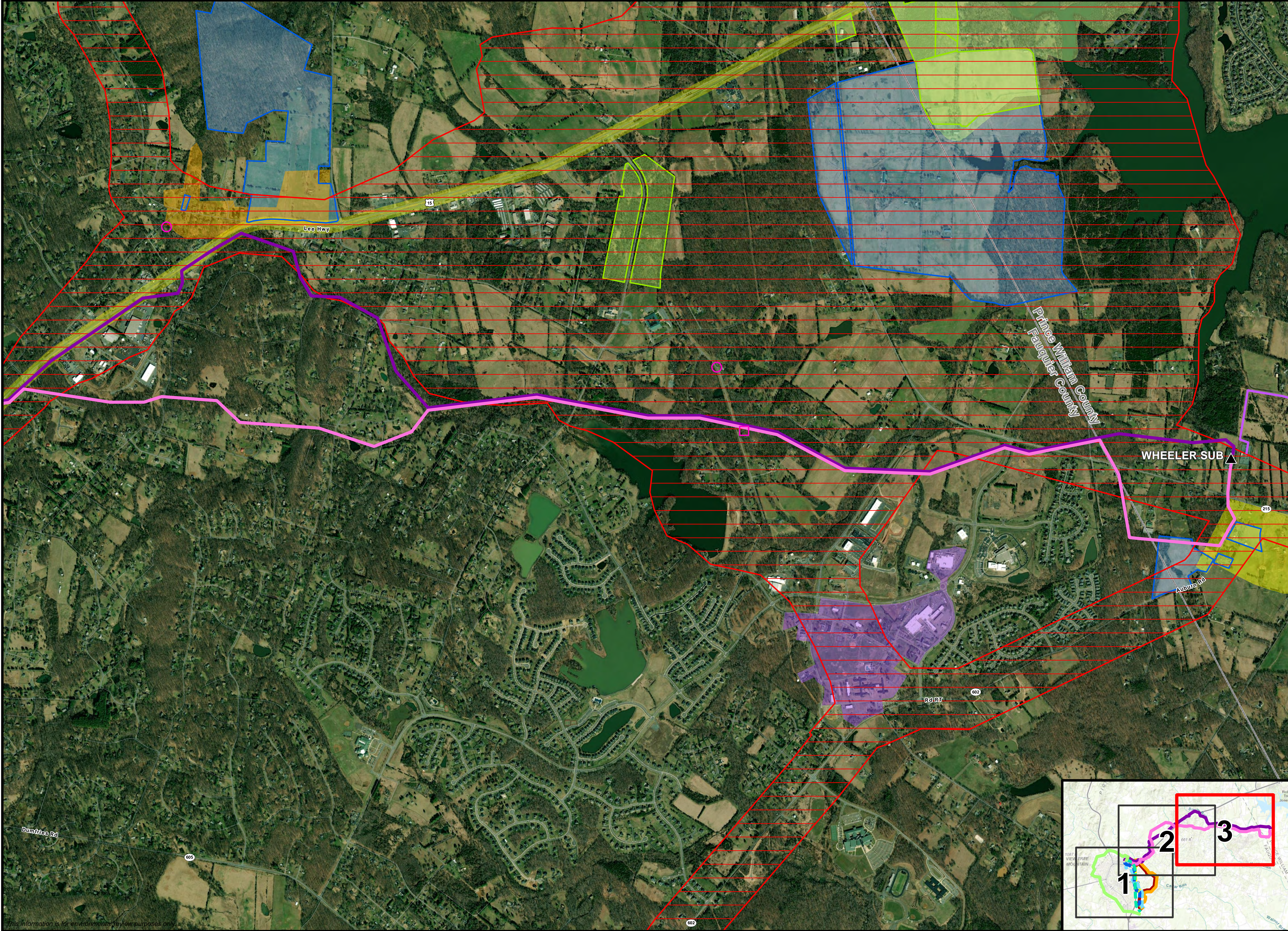
Figure 2
Cultural Resources
Map Set
Blackwell Rd 230 kV Transmission
Line and Substation Project
Fauquier and Prince William
Counties, Virginia
Page 2

- Proposed Substation or Transition Station
- Option 1, Overhead Route 1
- Option 1, Overhead Route 2
- Option 1, Overhead Route 3
- Option 1, Overhead Route 4
- Option 1, Underground Route 1
- Option 1, Underground Route 2
- Option 1, Underground Route 3
- Option 2, Overhead Route 1
- Option 2, Overhead Route 2
- Route Considered But Rejected
- Town of Warrenton Municipal Boundary
- Journey Through Hallowed Ground National Scenic Byway
- Eligible and Listed Features**
- Architecture Resource
- Afro-American Historical Association Data**
- Community
- Battlefield**
- Buckland Mills
- Historic District**
- New Baltimore
- Warrenton



0 900 1,800 2,700
Feet
1:10,800





This information is for environmental review purposes only.



Figure 2
Cultural Resources
Map Set
Blackwell Rd 230 kV Transmission
Line and Substation Project
Fauquier and Prince William
Counties, Virginia
Page 3

- ▲ Existing Substation
- Option 2, Overhead Route 1
- Option 2, Overhead Route 2
- Existing Dominion Transmission Line
- County Boundary
- Journey Through Hallowed Ground National Scenic Byway
- DHR Easement
- Eligible and Listed Features**
- Architecture Resource
- Individual Historic District Property
- Afro-American Historical Association Data**
- Community
- School
- Battlefield**
- Buckland Mills
- Historic District**
- Buckland, Village of Buckland
- New Baltimore
- Village of Greenwich
- Vine Hill Farms Station

